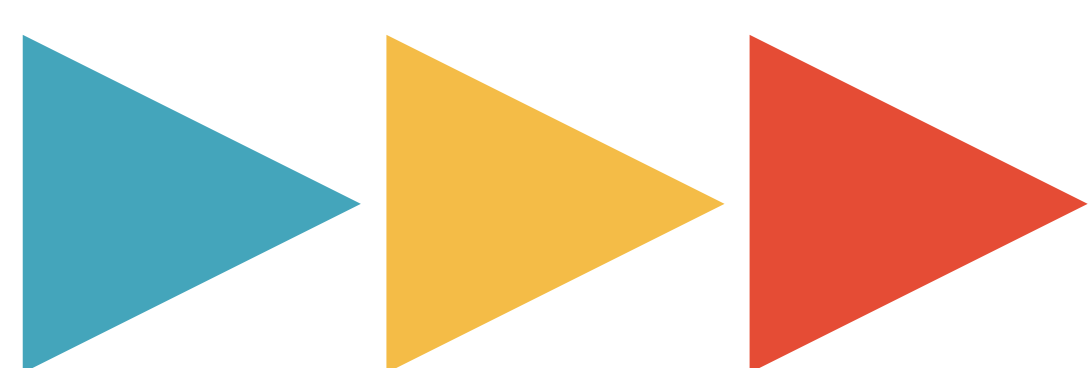


Welcome, neighbors!

Thank you for joining us to
review what we've
heard from you and
share feedback on
design concepts.



sppl.org/transform



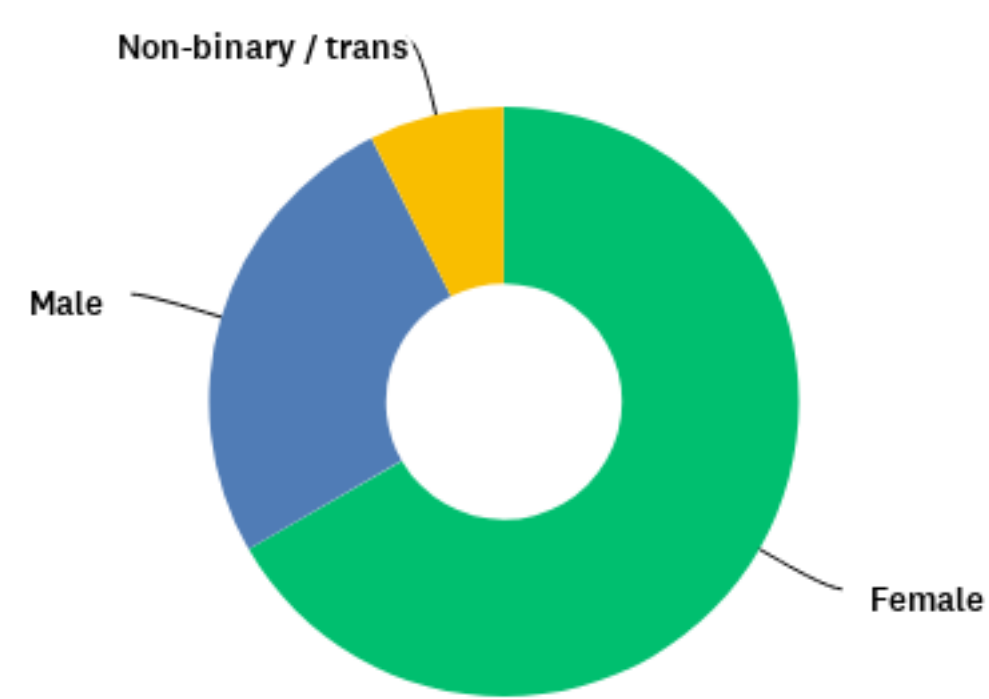
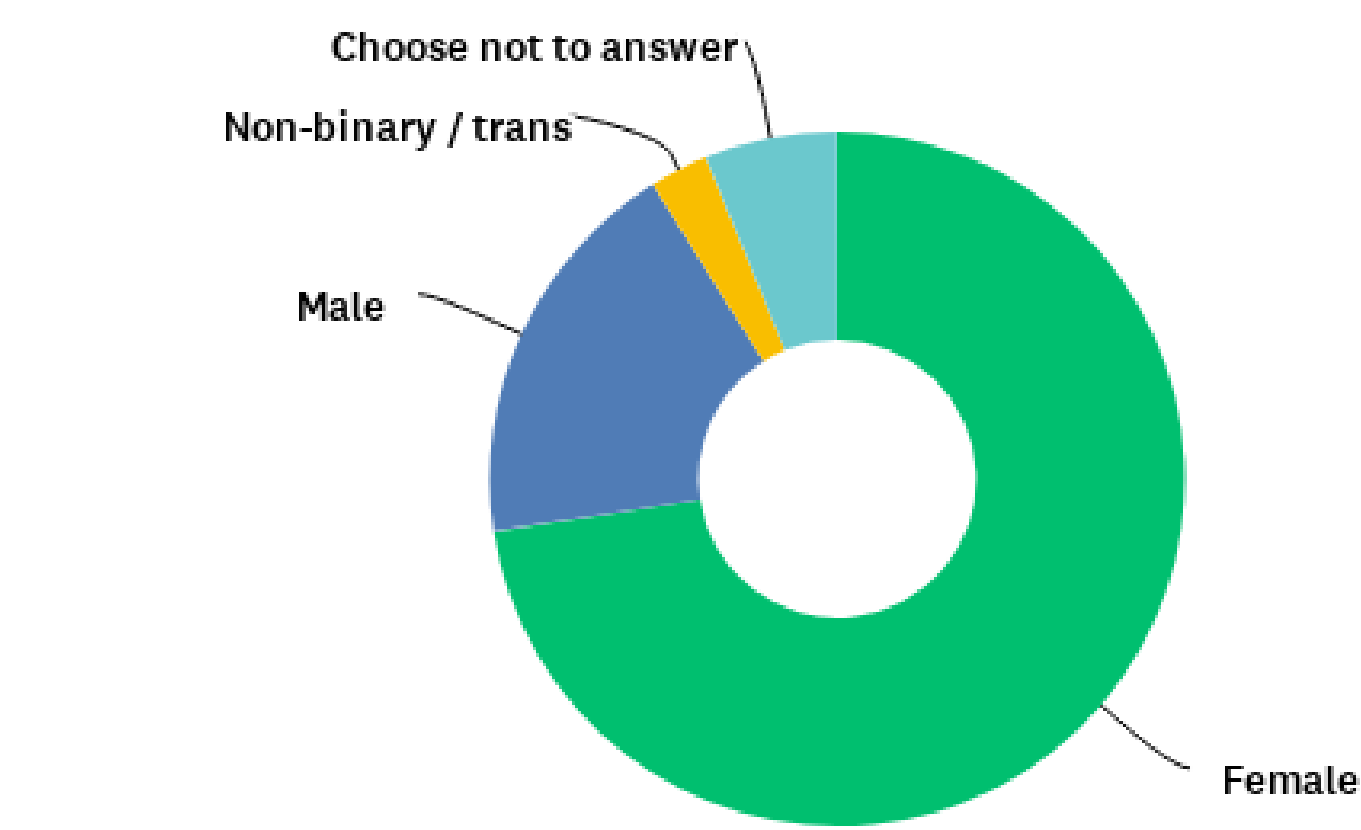
SURVEY RESULTS:

Demographics

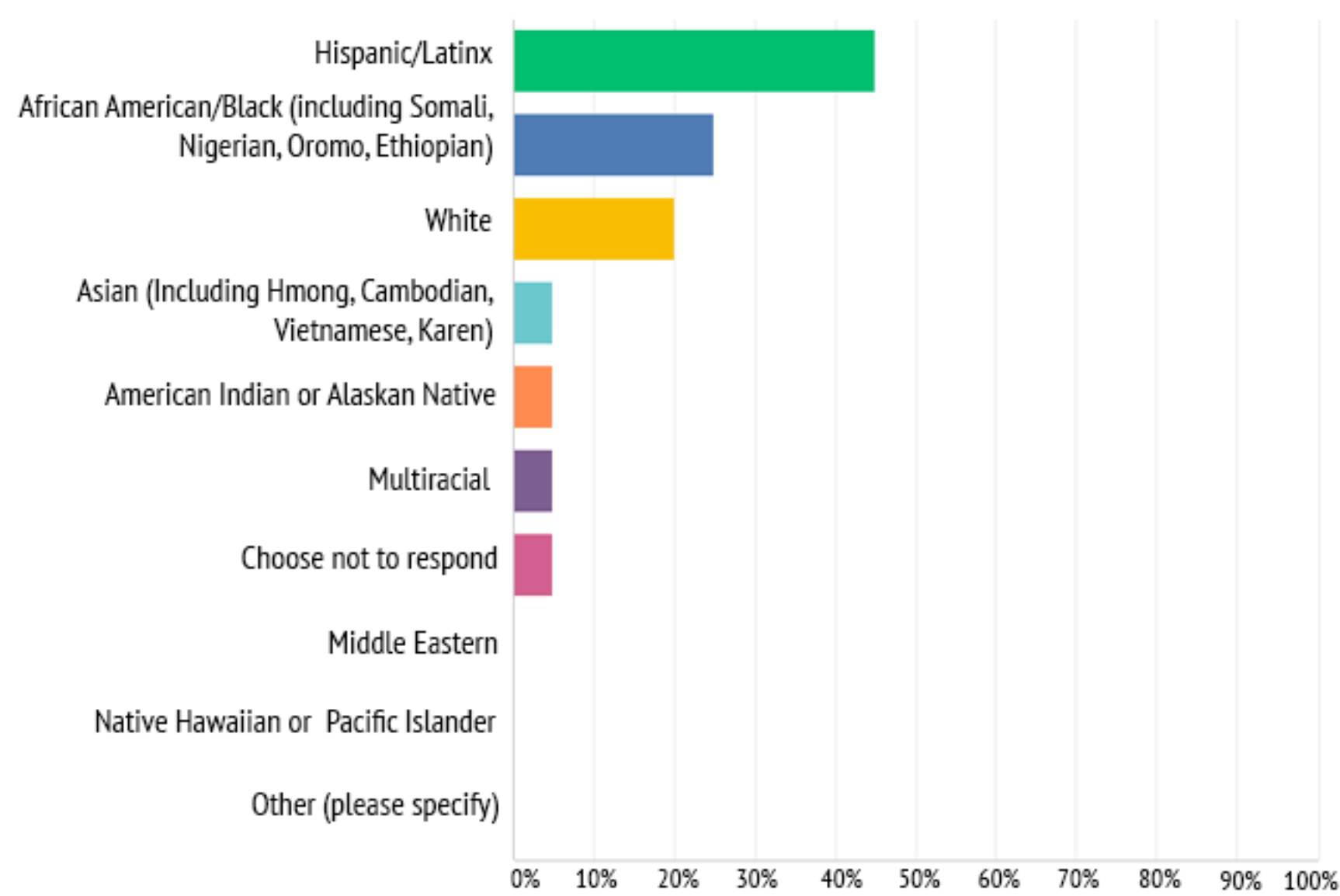
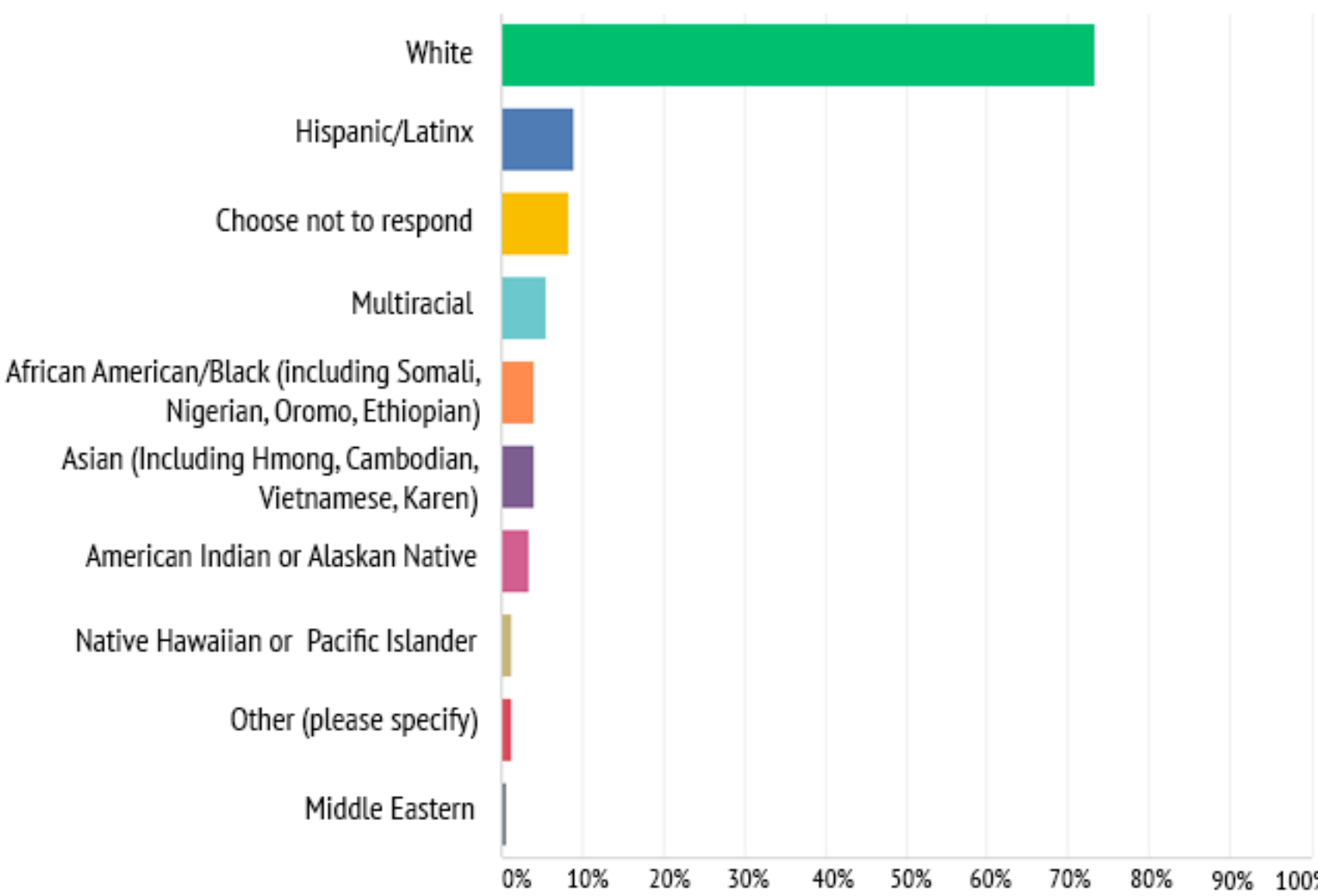
Online Survey Respondents
n: 166

Pop-up Survey Respondents
n: 28

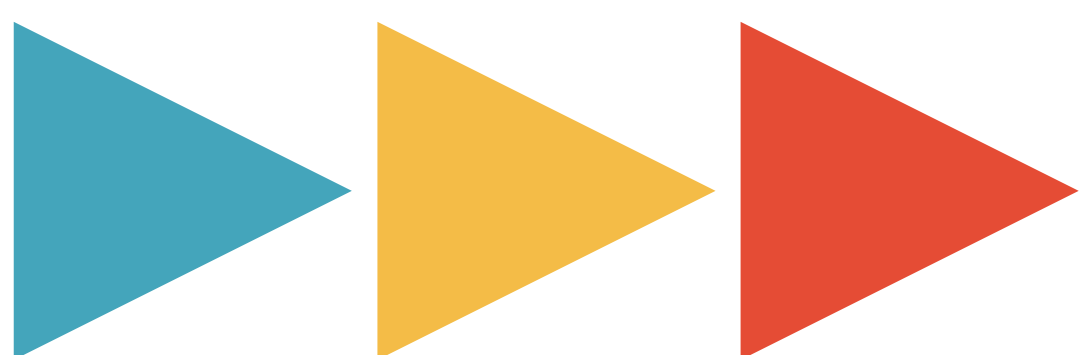
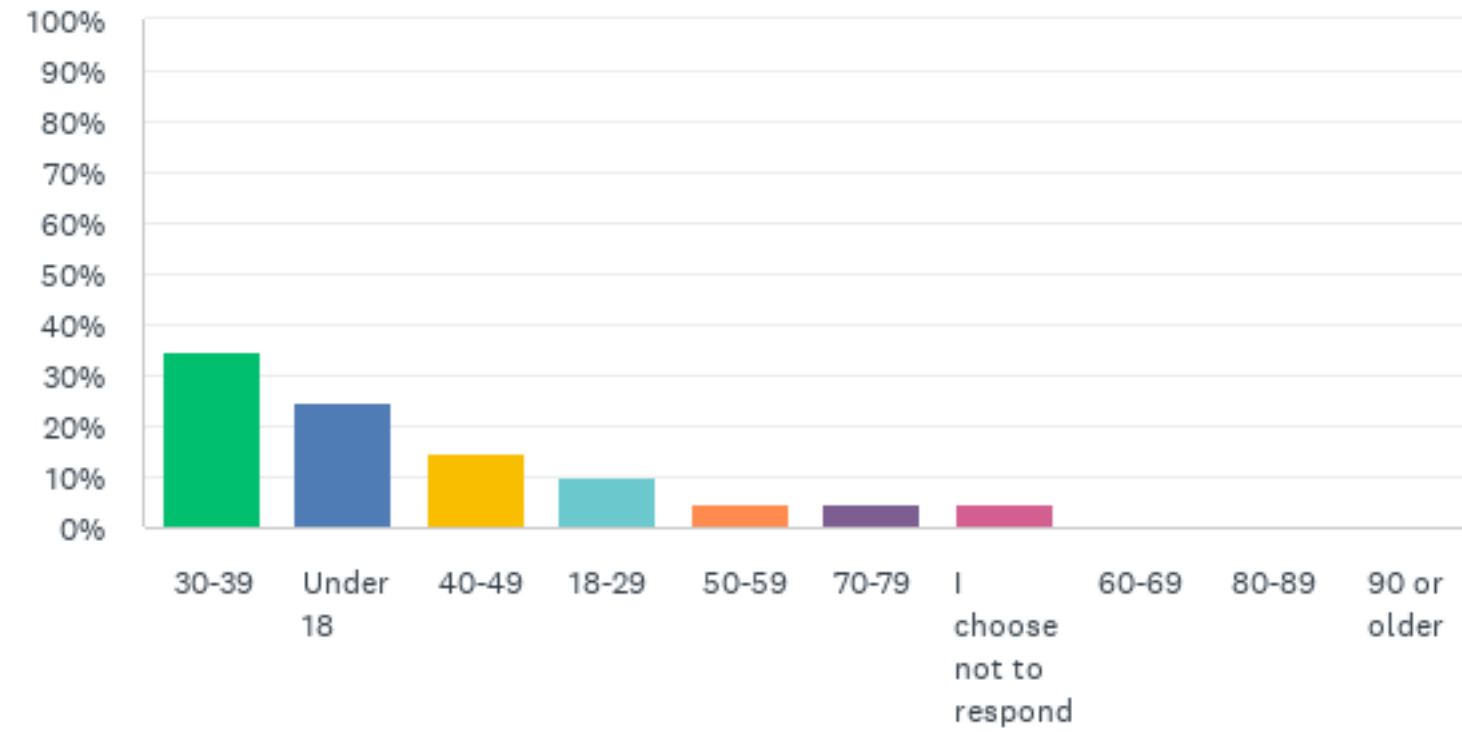
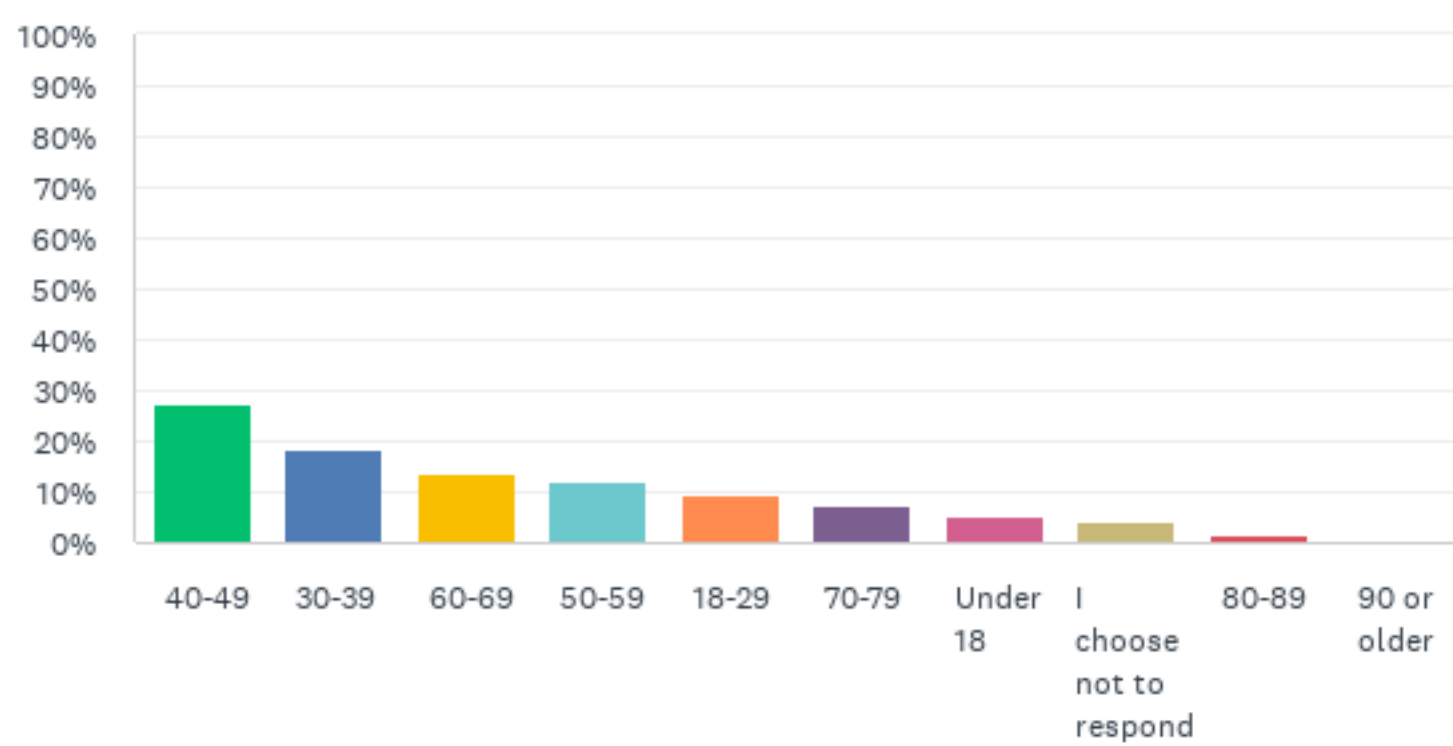
Gender Identity



Race/Ethnicity



Age



sppl.org/transform



SURVEY RESULTS:

Summary

WE ASKED: What library features are most important to meeting the needs of the community?

WE HEARD:

**all
respondents**

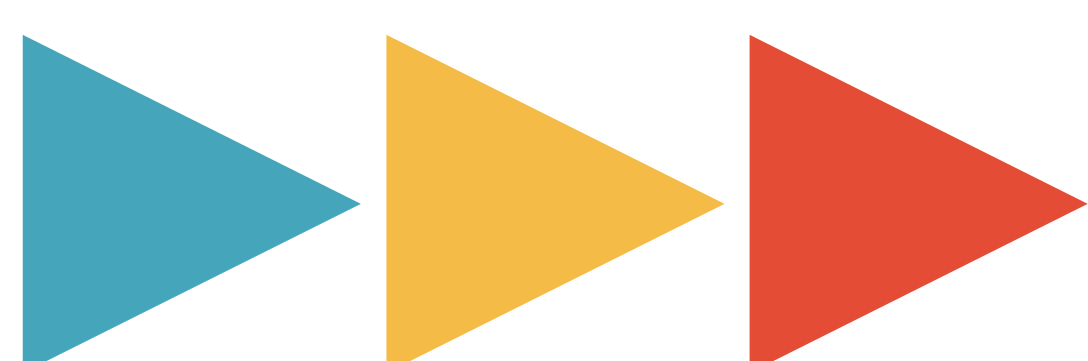
- A space that reflects the cultures in my community
- Improved accessibility
- Sustainable and environmentally-friendly libraries

**BIPOC
respondents**

- A space that reflects the cultures in my community
- Improved accessibility

**respondents
under age 18**

- A space that reflects the cultures in my community
- Sustainable and environmentally-friendly libraries



sppl.org/transform



SURVEY RESULTS:

Data

WE ASKED: How do you feel about adding green space for reading, relaxing, working, or programming?

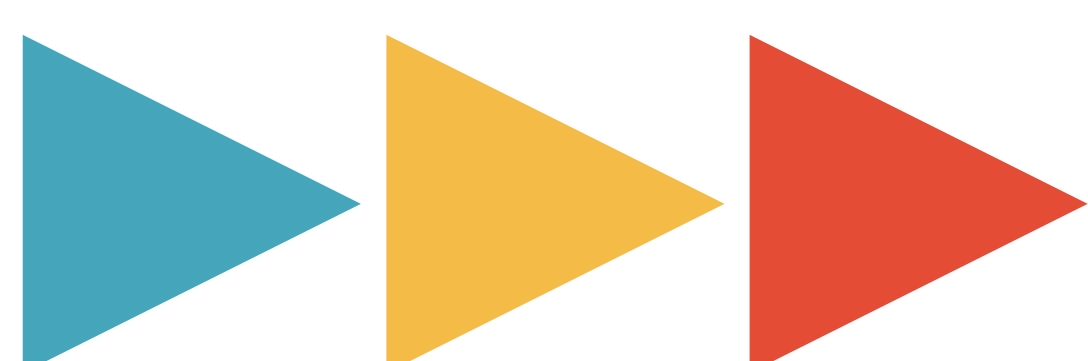
WE HEARD:

Across respondents, there is **strong community interest** in adding green space.

WE ASKED: What ideas do you support to make Riverview Library accessible to all?

WE HEARD:

There is **broad community support for building an addition** to make Riverview Library accessible for all.



sppl.org/transform



YOUTH-LED YOUTH ENGAGEMENT: Summary

Youth Recommendations for Riverview Library

- Expand space to accommodate a variety of needs
- Make the library more vibrant, comfortable, and welcoming
- Reconfigure existing layout to increase usability and safety

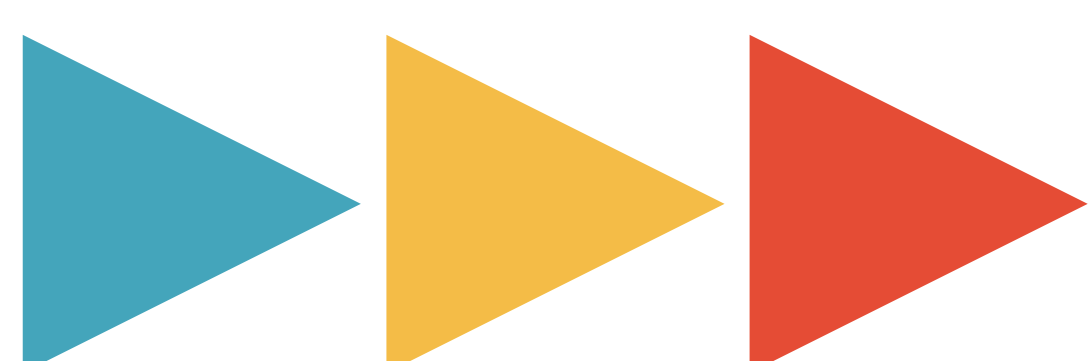


“

Teens report that books remain a primary reason for their visits to the library and stress the uniqueness of the Carnegie Library. They appreciate the book collection, helpful and friendly staff, having a quiet place to study, being surrounded by books and the library's closeness to their school.

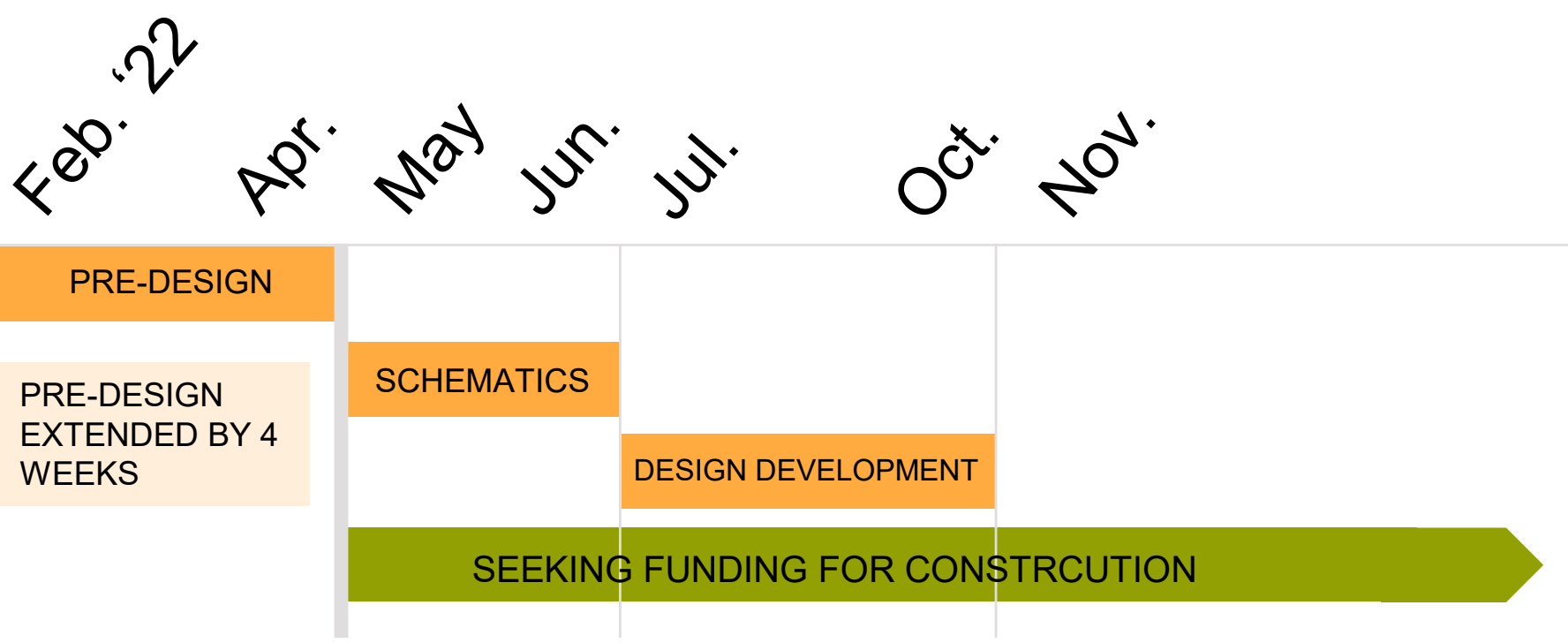
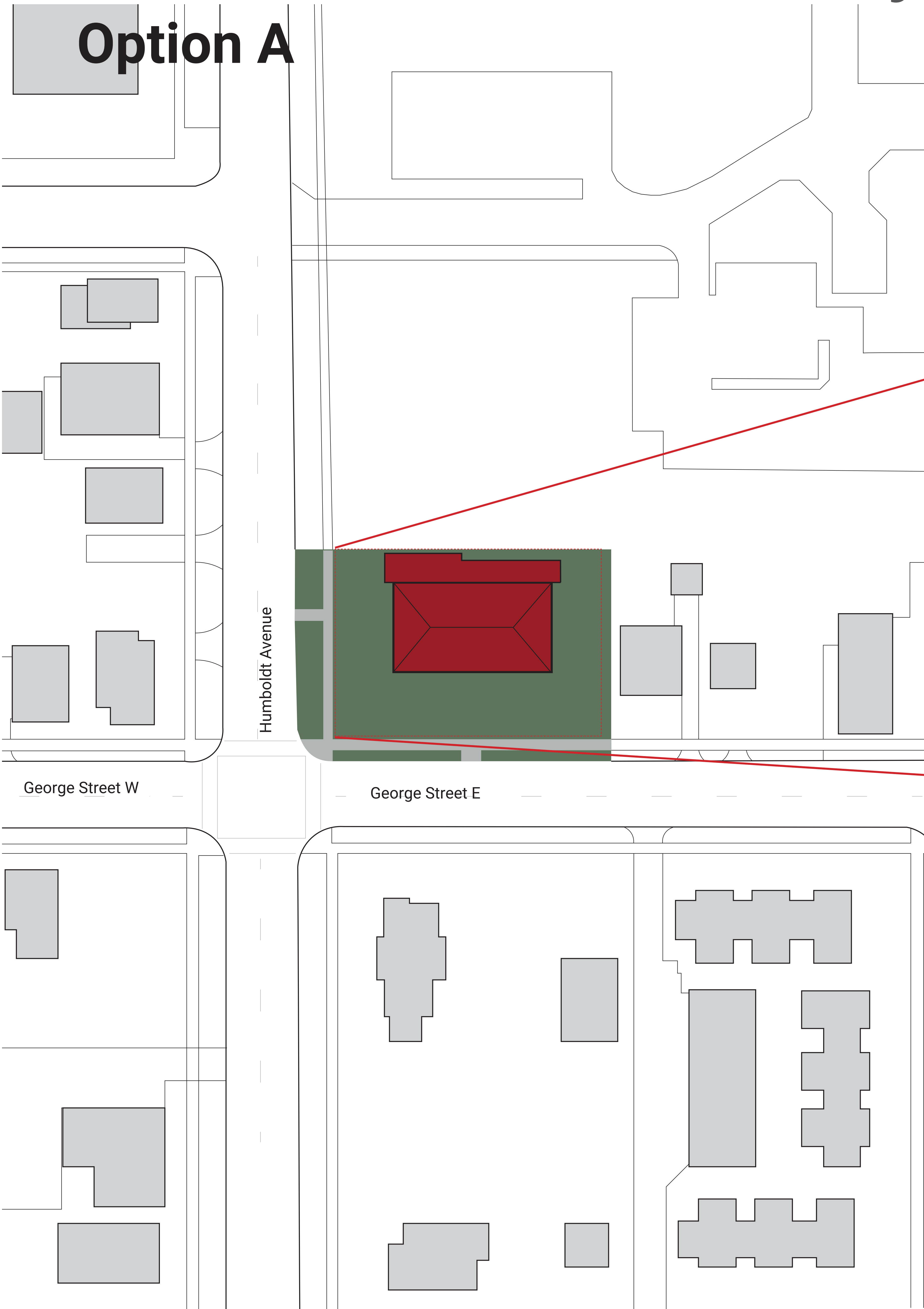
”

-Youth Leadership Initiative on Riverview Library

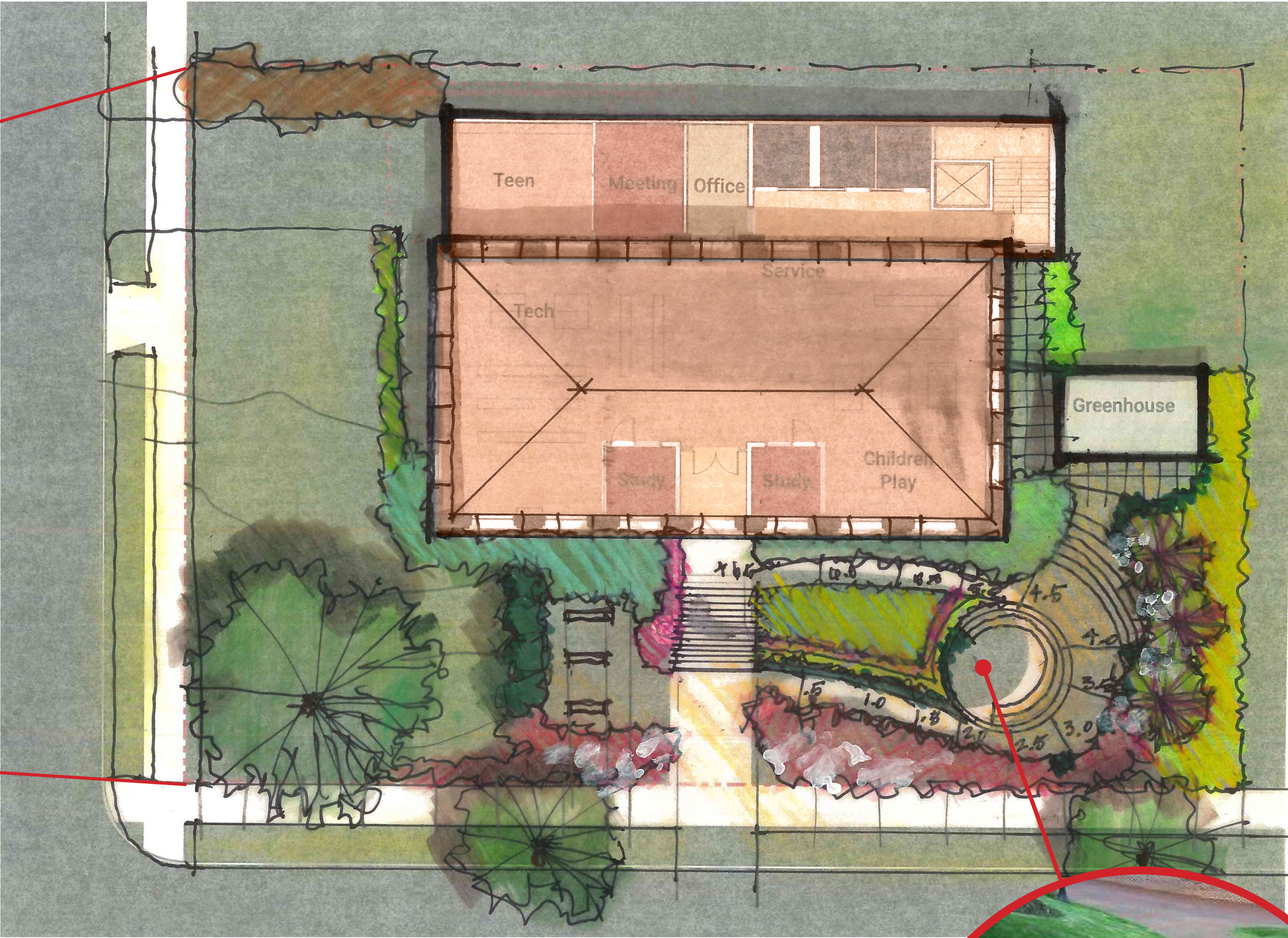


Saint Paul Public Library Riverview

Option A



Safety and maintenance upgrades include new site lighting, bike parking, cameras, and concrete and paving repairs.



Conceptual Site Plan B

Q: What does it mean this is a "Conceptual" site plan?

A: Conceptual is the first phase of the project. The overall idea for the site is established however there is still a significant opportunity for input in design.



Exterior programming opportunities provide safe space for children and community access to outdoor space for storytime and events.

Riverview

Option A



New entry provides accessible access to building, **everyone can enter through the front door.**



Conceptual Floor Plan A

The estimated cost is within the Library Transformations project budget.

Q: What does it mean this is a “Conceptual” floor plan?

A: Conceptual is the first phase of the project. The overall idea for the building layout is established however there is still a significant opportunity for input in design.



Equity and safety are improved with new single user gender-neutral and accessible restrooms, relocated to improve sightlines for library staff.

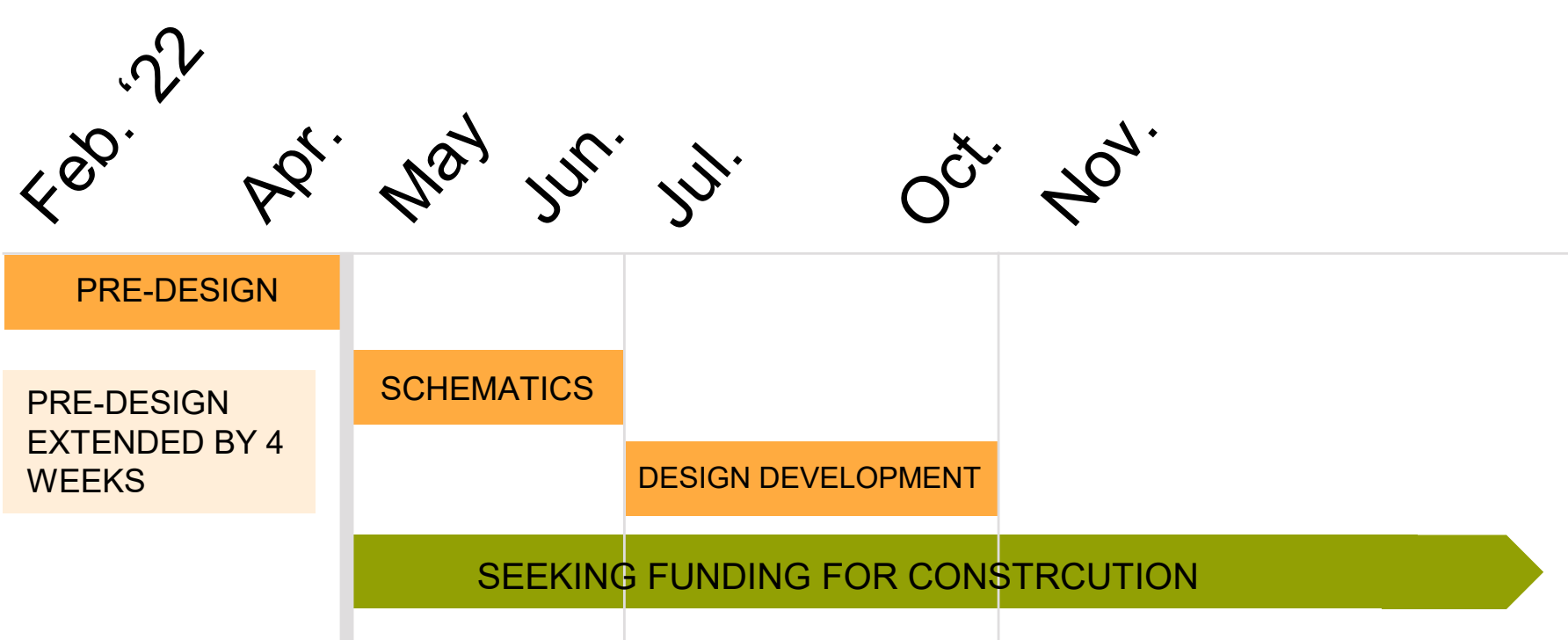
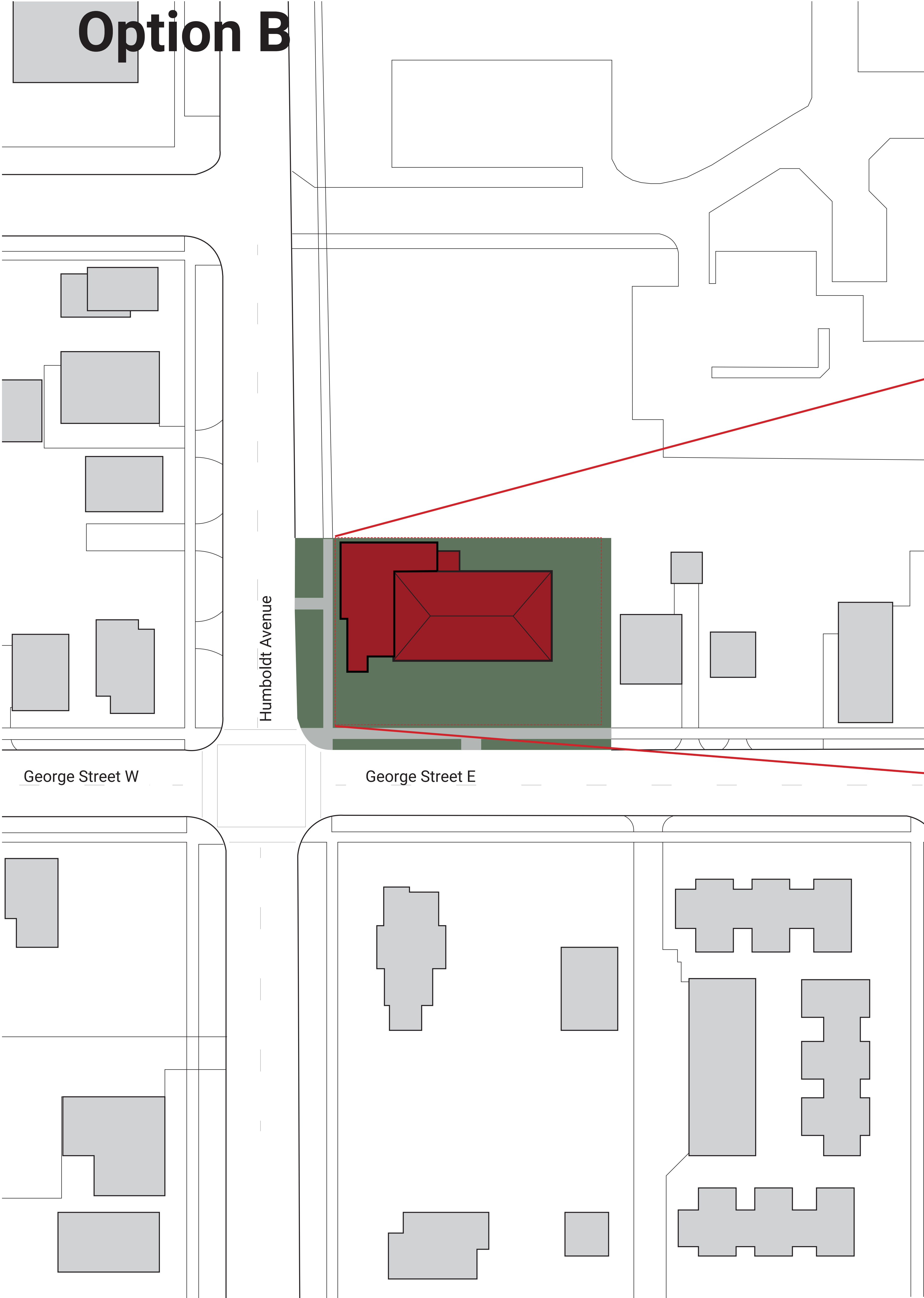


Expanded teen and meeting space is shown on main level to provide increased opportunities for programming.

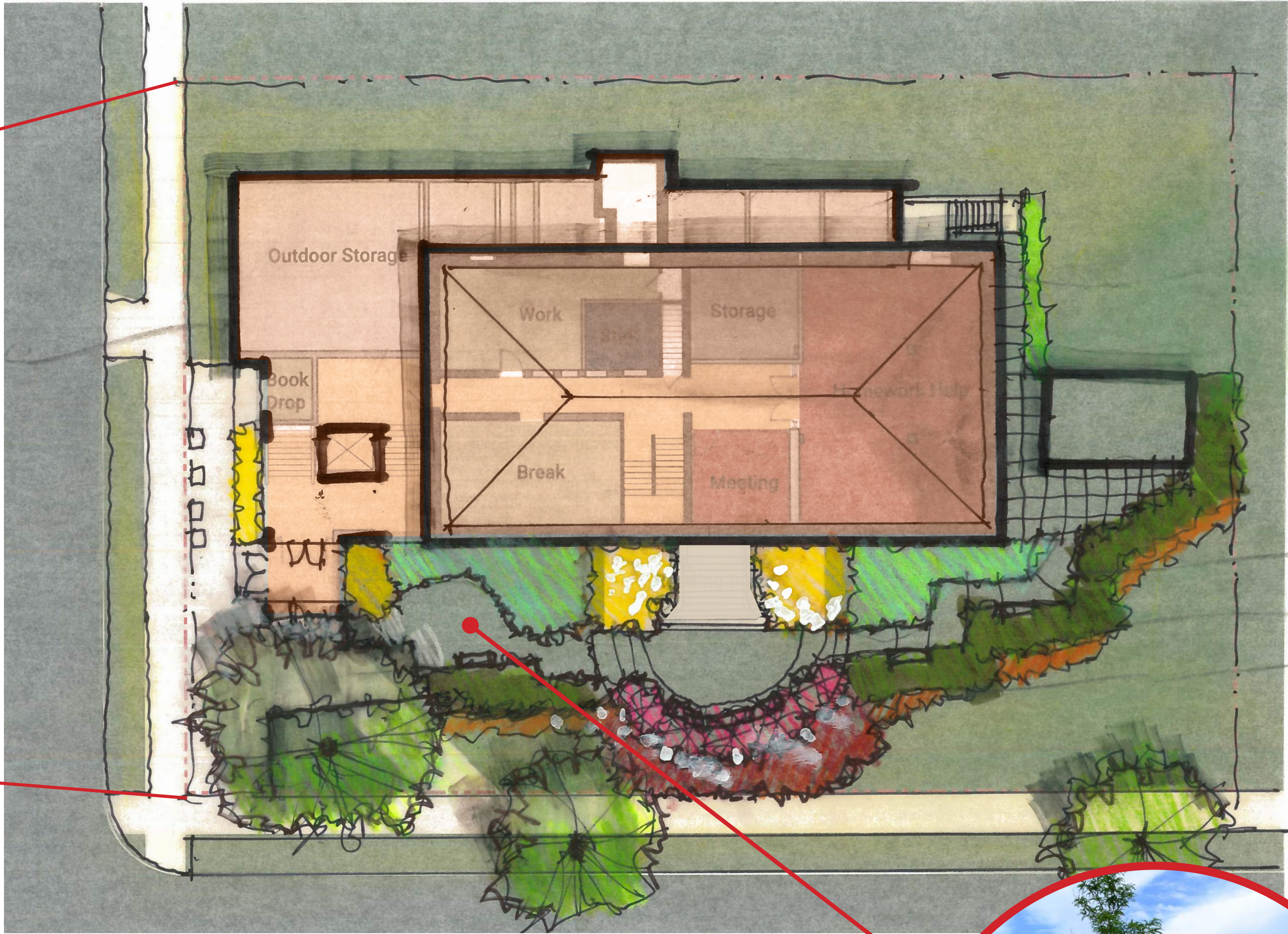


Saint Paul Public Library Riverview

Option B



Safety and maintenance upgrades include new site lighting, bike parking, cameras, and concrete and paving repairs.



Conceptual Site Plan B

Q: What is a "conceptual site plan?"

A: Conceptual is the first phase of the project. The overall idea for the site is established however there is still a significant opportunity for input in design.



Exterior programming opportunities provide safe space for children and community access to outdoor space for storytime and events.

Riverview

Option B



New entry provides accessible access to building, **everyone can enter through the front door.**



Conceptual Floor Plan B

The estimated cost is within the Library Transformations project budget.

Q: What does it mean this is a “Conceptual” floor plan?

A: Conceptual is the first phase of the project. The overall idea for the building layout is established however there is still a significant opportunity for input in design.



Equity and safety are improved with new single user gender-neutral and accessible restrooms, relocated to improve sightlines for library staff.



Technology-rich community Room is shown on main level providing opportunities for increased programming and supervisable quiet study.



Which features are most important to you?

What excites you about either option?

What questions do you have?

Option A



Based on Surveys, respondents support the idea of expanding the Riverview Carnegie Library to deliver a more equitable accessibility entry and provide additional program space.

Because the 1916 Riverview Carnegie Library is on the National Register for Historical Places, any additions or alterations will need to be reviewed by the Saint Paul Heritage Preservation. In terms of the materials for the new addition, the guidelines state the following: “Historic buildings exterior alterations, or related new construction shall not destroy historic materials that characterize the property. The new work shall be differentiated from the old and shall be compatible with the massing, size, scale, and architectural features to protect the historic integrity of the property and its environment.”

In Option A, the original entry is maintained and a new exterior stair and 1:20 sloped walkway have been added, to allow **all patrons to enter through the main entry**.

An addition to the previously altered North elevation of the building allows for a new **main level community room**. This allows the community room to be utilized throughout the day for programs such as storytime, guest author readings, large group meetings, and educational programs. When not being used for programs, this room provides a space for **quiet reading or focus work space**. The addition would add 1,900 SF per level.

A dedicated teen space is also shown as part of the addition. Youth Engagement indicates teens want a dedicated space for collections, soft seating, technology and collaboration.

Accessibility, equity and safety are improved with the addition of new main level gender inclusive restrooms.

In addition to the **outdoor storytime and reading** a location for a green house has been identified.

The existing building envelope (foundation, slab, walls and roof) and mechanical systems do not meet today’s energy code and will require significant investment to meet the Saint Paul’s Sustainable Building Policy where allowed by the Saint Paul Heritage Preservation commission.

Share your comments here

Option B



In Option B, the main entry is moved to an addition and circulation occurs in the addition with a new elevator and stairs allowing all patrons to enter through the new entry. The original entry is re-imagined as a raised plaza that is accessed from the inside of the library.

Because the 1916 Riverview Carnegie Library is on the National Register for Historical Places, any additions or alterations will need to be reviewed by the Saint Paul Heritage Preservation.

The addition sits on the previously-altered west facade allows for a new **main level community room**. This allows the main level community room to be utilized throughout the day for programs such as storytime, guest author readings, large group meetings, and educational programs. When not being used for programs, this room provides a space for quiet reading or focus work space.

The addition would add 1,400 SF at the main level and 500 SF for the entry at the ground level.

The existing reading room is reorganized to fit an **expanded teen area and a children’s area with dedicated play activities**. Youth Engagement indicates teens want a dedicated space for collections, soft seating, technology and collaboration.

Accessibility, equity and safety are improved with the addition of new main level gender inclusive restrooms.

In addition to the **outdoor storytime and reading** a location for a green house has been identified.

The existing building envelope (foundation, slab, walls and roof) and mechanical systems do not meet today’s energy code and will require significant investment to meet the Saint Paul’s Sustainable Building Policy where allowed by the Saint Paul Heritage Preservation commission.

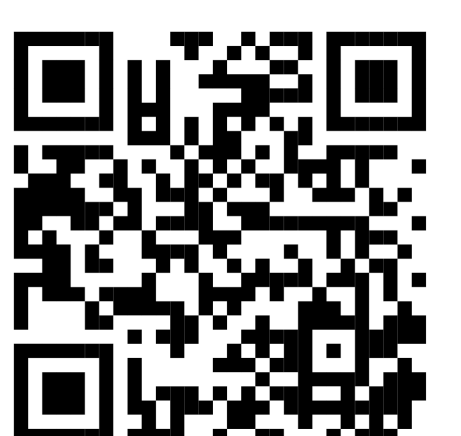
Criteria for Determining a Design Direction

- Community input
- Building assessments
- Project budget
- Saint Paul's strategic goals for libraries, sustainability, equity and inclusion, and fiscal responsibility
- SPPL's vision for library facilities that:
 - Are safe, inviting, affirming, and comfortable libraries for people of all cultures, abilities, and communities
 - Have improved accessibility
 - Have additional spaces and study rooms for communities to gather, work, study, and collaborate
 - Separate quiet and loud spaces
 - Have enhanced play and learn spaces
 - Are technology-rich environments

City administration will share a decision with the community in May. From there, the community engagement and design process continues.

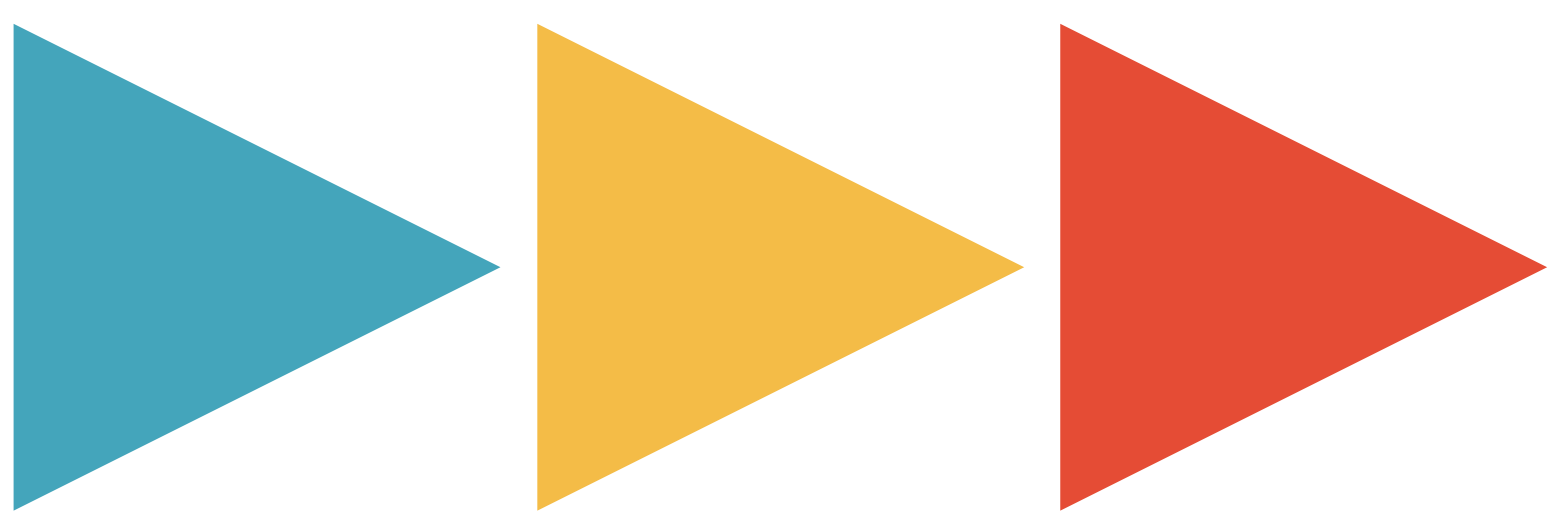


sppl.org/transform



Stay updated!

Join our newsletter list
to receive updates and
invitations to future
opportunities to
provide input.



sppl.org/transform