

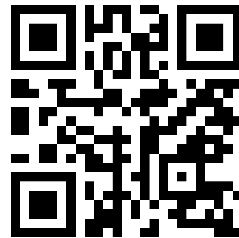
Share your input! Start by
answering the first question.

Go to

www.menti.com

Enter the code

4828 1899



Or use QR code

Welcome



Land Acknowledgement

Every community owes its existence and vitality to generations from around the world who contributed their hopes, dreams, and energy to making the history that led to this moment. Some were brought here against their will, some were drawn to leave their distant homes in hope of a better life, and some have lived on this land for more generations than can be counted. Truth and acknowledgment are critical to building mutual respect and connection across all barriers of heritage and difference.

We begin this effort to acknowledge what has been buried by honoring the truth. We are standing on the lands of the Dakota People. We acknowledge the Ojibwe and Ho Chunk people who also call this place home. We pay respects to their elders past and present. Take a moment to consider the treaties made by the tribal nations that entitle non-Native people to live and work on traditional Native lands. Consider the many legacies of violence, displacement, migration, and settlement that bring us together here today.

Please join us in using this community space as a place for growth and reconciliation. We invite you to use this moment together to examine our cultural narratives that perpetuate violence against indigenous communities and work to create space to engage with and learn from indigenous community members.

Introductions

Councilmember Jalali

Councilmember Yang

Catherine Penkert - SPPL Director

Barb Sporlein - SPPL Deputy Director of Operations

Marika Staloch - SPPL Special Projects and Initiatives Manager

Stacy Opitz – SPPL Marketing and Communications Manager

Tiana Bellamy – Equity, Inclusion, and Antiracism Coordinator

(LSE Staff will be introduced shortly)

Remember to share
your input!



Go to
www.menti.com

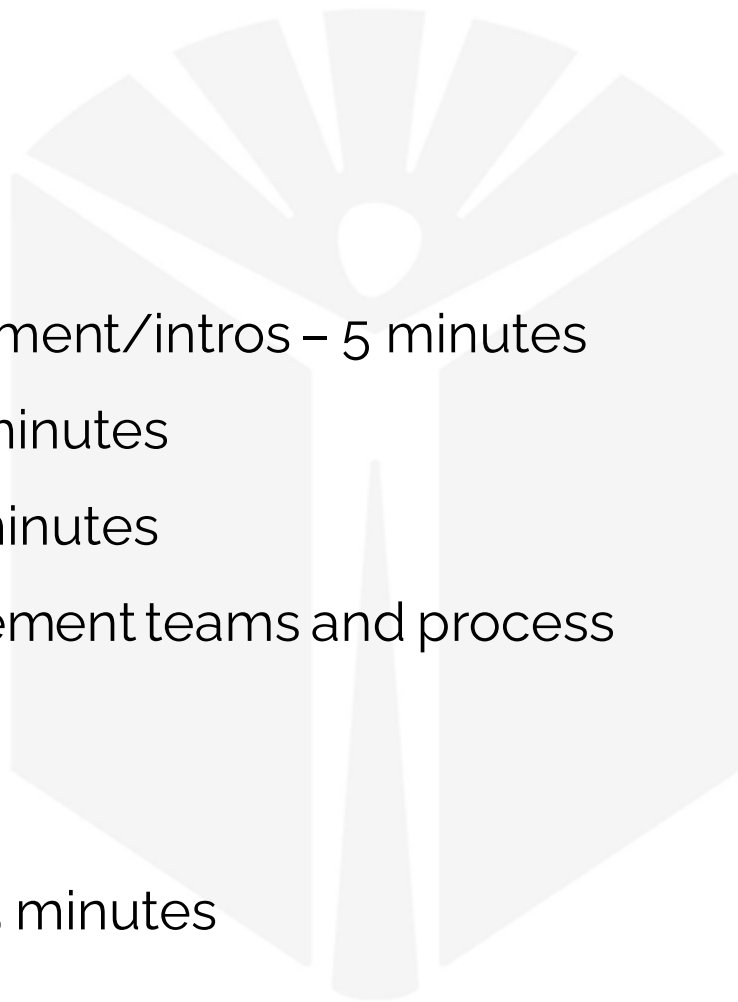
Enter the code
4828 1899



Or use QR code

Agenda

1. Interactive welcome/acknowledgement/intros – 5 minutes
2. Housekeeping for the meeting – 5 minutes
3. What brought us to this point – 10 minutes
4. Introduction to the design & engagement teams and process
– 10 minutes
5. Your libraries – 15 minutes
6. Interactive ideas for your library – 15 minutes



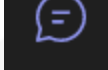
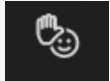

IAP2 spectrum

| | INFORM | CONSULT | INVOLVE | COLLABORATE | EMPOWER |
|---------------------------|---|--|---|---|--|
| PUBLIC PARTICIPATION GOAL | To provide the public with balanced and objective information to assist them in understanding the problem, alternatives and/or solutions. | To obtain public feedback on analysis, alternatives and/or decision. | To work directly with the public throughout the process to ensure that public concerns and aspirations are consistently understood and considered. | To partner with the public in each aspect of the decision including the development of alternatives and the identification of the preferred solution. | To place final decision-making in the hands of the public. |
| PROMISE TO THE PUBLIC | We will keep you informed. | We will keep you informed, listen to and acknowledge concerns and aspirations, and provide feedback on how public input influenced the decision. | We will work with you to ensure that your concerns and aspirations are directly reflected in the alternatives developed and provide feedback on how public input influenced the decision. | We will look to you for advice and innovation in formulating solutions and incorporate your advice and recommendations into the decisions to the maximum extent possible. | We will implement what you decide. |

Please remember to...

- Recognize and acknowledge the history and inequities that impact our individual communities.
- Share your truth in ways that respect other people's truth. All contributions and opinions matter and count.
- Venture to be honest, with gentleness, about real experiences.
- When the going gets tough, turn to wonder. "I wonder what brought them to this belief. I wonder what they're feeling right now. I wonder what my feeling teaches me about myself."

Microsoft Teams

- To show the conversation, click on the speech bubble. 
- Share reactions with the hand/smiley button 
- Feel free to turn on your video, *and* it's ok not to. (we may turn them off for bandwidth.) 

Questions | Comments

- Please add your questions/comments in the chat. Please also indicate your home neighborhood when you chat.
- We will likely not be able to answer all questions tonight. We are collecting everything that comes in via chat. We will use your submitted questions to continue building the list of FAQs on our project website sppl.org/transforming-libraries.

CO-CREATING A VISION TO TRANSFORM LIBRARIES



Scope of our Work

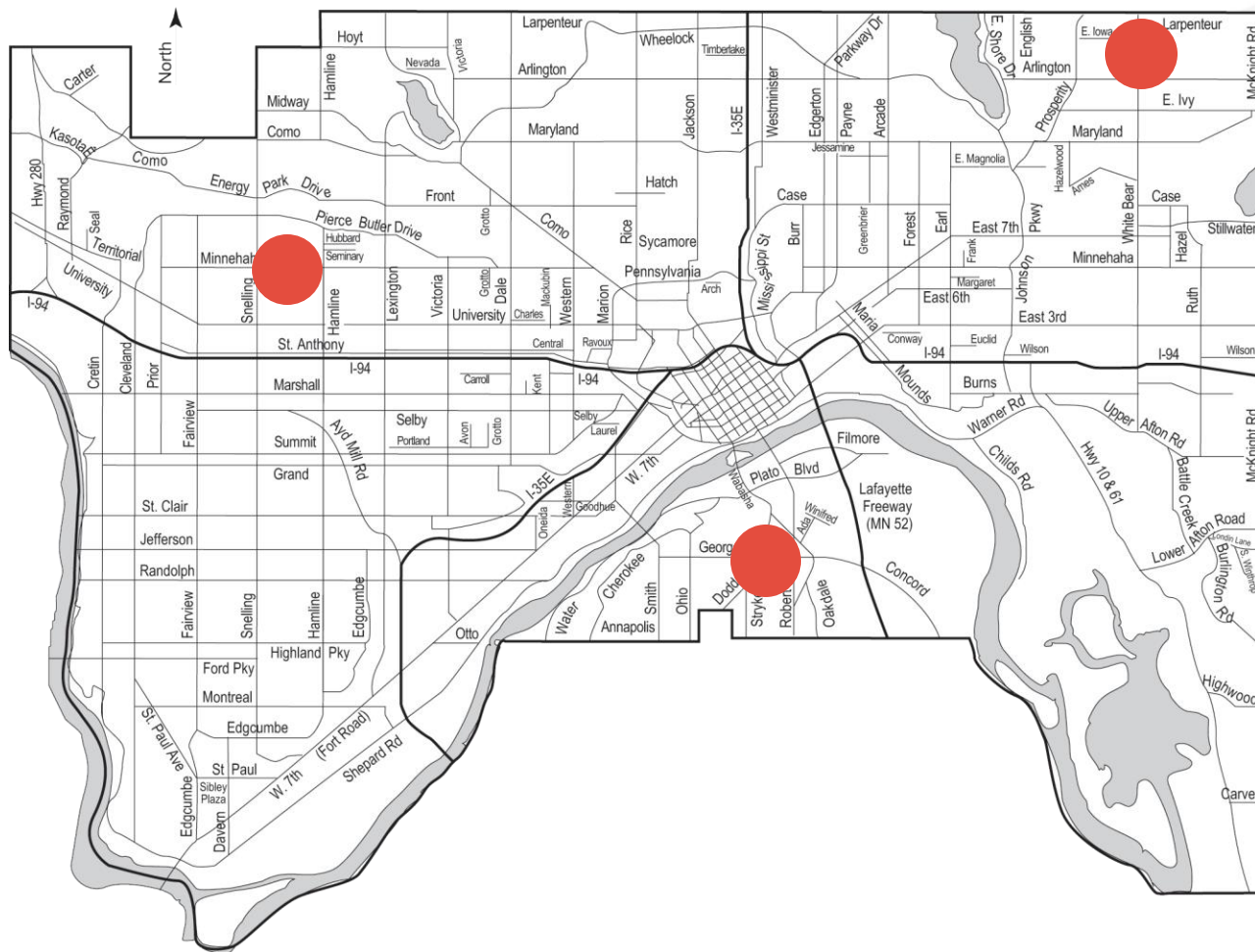


Why:

- As public spaces, Saint Paul libraries are a unique and essential element to our city's social infrastructure.
- As we reckon with the dual pandemics of COVID-19 and systemic racism, we have an opportunity to reimagine, redesign, and invest in community libraries that meet the needs of residents now and for the next generation.

How:

- Work together across similarities and differences, to co-create library designs and case for investment that reflect a community-informed vision:
- **Spaces that are safe, inviting, affirming, and comfortable for people of all cultures, abilities, and communities.**

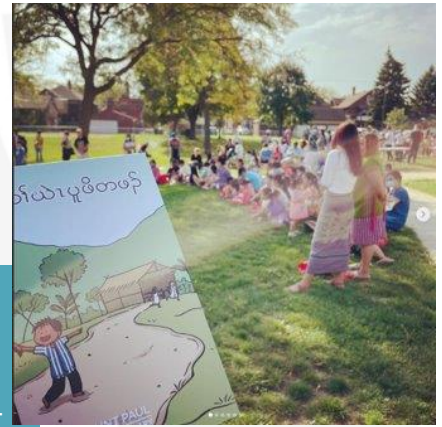


What:

Engage community in co-creating schematic designs for the transformation of 3 neighborhood libraries that are well loved, well used, and well worn.

Facilities Vision

Imagine gathering spaces in our communities for neighbors to meet and connect, for job seekers to access Wi-Fi and resume help, for children to discover and learn through play, and for community members to work, study, and access services. These free, accessible spaces that welcome everyone exist in our public libraries. They are **neighborhood resilience centers**.



Investment Needs

Transform three neighborhood locations that are outdated, in poor condition, struggle to support high use, and have not been renovated in 30+ years.

At all locations:

- **Improve technology**
- **Incorporate play and learn spaces**

| | Hamline Midway | Riverview | Hayden Heights |
|------------------|---|---------------------------------------|----------------|
| Scope | Expansion through renovation + addition or new building | Renovation Possible small addition | Renovation |
| Funding secured? | Yes | Not yet | Not yet |

Hamline Midway Library



Hayden Heights Library



Riverview Library



The Opportunity



- Co-create with neighbors **safe, inviting, affirming, and comfortable** libraries for people of all cultures, abilities, and communities.
- Improve **accessibility**
- Add community meeting/program **spaces** and study **rooms**
- Separate quiet & loud spaces **acoustically**
- Enhance **play & learn** space and **technology**

Check In & Word Cloud



LSE Introduction



- Extensive Relevant Library Experience and Expertise
- Extensive Relevant Sustainability Experience and Expertise
- Minneapolis-based, Black-owned business
- Commitment to equity is deeply embedded into our practice

LSE
ARCHITECTS

Select | Relevant



George Latimer Central Library



Sumner Library



Sun Ray Library



Adams Spanish Immersion



Oxboro Library - HC



Highland Library - Before and After



Midway YMCA



Webber Park Library - HC



North High School

Key LSE Team



MOHAMMED LAWAL
CEO/Principal
Architect & Design



**JENNIFER
ANDERSON-TUTTLE**
Principal Director
Public Sector



RANDY KLING
Sr. Project Architect /
Manager



**KEON
BLASINGAME**
Project Manager



CHRIS LAABS
Project Architect /
Manager



TUNDE OLUSANYA
Design / Modeling



**NICOLE
BAUKNIGHT**
Documentation



**SUSAN
JACOBSON**
Interior Design



**ROSS
ANDERSON**
Interior Design



PHIL RAMSAY
Specifications

Support and resources from a firm of 50+

Design Team

Sub-Consultant team selected for ability to directly respond to Saint Paul's priorities for expertise and experience in these areas:

- **Library Design**
- **Equity and Inclusion**
- **Historical Buildings**
- **Sustainable Design**



Design Team



SAINT PAUL
MINNESOTA



SAINT PAUL
PUBLIC LIBRARY



COMMUNITY ENGAGEMENT

TRICIA HEURING
Founder Public Functionary
Adjunct Professor MCAD

STRUCTURAL



CIVIL

PIERCE PINI &
ASSOCIATES, INC.

MEP & ENERGY MODELING



LANDSCAPE



HISTORICAL



COST ESTIMATING



ACOUSTICS



Key Engagement Team



TRICIA HEURING
Community Engagement Strategist



MOHAMMED LAWAL
CEO/Principal Architect & Design



JENNIFER ANDERSON-TUTTLE
Principal Director Public Sector



SAM ERO-PHILLIPS
Project Designer





Cohort Lead and Arts Consultant

Tricia Heuring

Tricia Heuring is a Thai American curator, public art consultant, and educator. Her practice has been shaped by creating opportunities and community for emerging, BIPOC artists in the Twin Cities. As a co-founder of Public Functionary, a Northeast Minneapolis-based multidisciplinary arts platform, she supports under-resourced artists in building economic sustainability through studio practices and exhibitions. Advocating for an equitable and inclusive MSP arts sector has led to consulting and teaching with civic, grant-making, public art, and academic organizations. As a thought leader in the arts, she has been a speaker at Tedx UMN, MCAD, Pollen Midwest, Walker Art Center, Common Field, Springboard for the Arts, Creative Mornings, American Swedish Institute, The Coven, among others. Tricia is a graduate of Macalester College and holds an M.A. in arts management from St. Mary's University.

Artist Advisory Cohort



The Artist Advisory Cohort will participate in the ongoing community engagement effort for the design of the Hamline Midway, Hayden Heights and Riverview Libraries. This includes regular meetings and events with stakeholders, and examining data collected to date through previous engagement efforts. They will co-facilitate and lead ideation on creative engagement sessions with LSE for community feedback. They will identify points of particular relevance, whether tensions, connections or opportunities, and develop creative encounters for further public conversation around those points. They will also reflect on their own experience as St. Paul artists and community members to creatively inspire dialogue about the future of libraries as cultural hubs.

The artist advisory cohort will review and represent community interest in late-stage design review and provide recommendations for arts engagement and/or incorporation of public artworks in future phases of the project.



Artist Advisory Cohort

Rebekah Crisanta de Ybarra (Maya-Lenca Nation) is a multidisciplinary artist, musician, and culture bearer whose work is rooted in Indigenous Futurisms. She has extensive experience in community-based social practice, public arts, creative place-making, and intergenerational arts education with Twin Cities nonprofits, schools, and libraries. She is a 2021-22 Jerome Hill Artist Fellow. Previously she has been a recipient of the Knights Art Challenge as an artist/curator creating Electric Machete Studios Latinx art and music production house and gallery. She has also worked with Creative City Making public art projects for building equity in the Minneapolis departments of Regulatory Services, and with Forecast Public Art creating temporary murals for the Flint Hills Festival. She is currently working with Public Art St. Paul and the City of St. Paul on a public art project honoring the West Side Flats history and Wabasha corridor.



Artist Advisory Cohort

Bayou is an artist and designer born in St. Paul. Bayou creates murals, art installations, digital illustrations, digital and print materials for artists & organizations, woodwork, and works as a teaching artist. Bayou's art and design embody themes of nature from the micro to the cosmic, black and collective liberation, healing trauma, time, portals, geometry, setting intentions for affirmations, asking questions, symbols, and identity exploration. Bayou has created and co-facilitated art-based workshops, events, community gathering, and exhibitions with the Million Artist Movement, Kulture Klub Collaborative, Cultural Wellness Center, Northern Lights, Black Table Arts, Public Functionary, Jungle Theater, Exposed Brick Theatre, and Hennepin County Libraries. Bayou was a member of the Northern Lights Program council for two years helping reshape and reform how Northern Lights MN programmed and selected artists for the Northern Spark art festival. Bayou has held an artist residency at the Bell Museum from 2019-2021 focused on climate change, was selected as a 2019-2020 curatorial fellow at MIA, and has received several grants in collaboration with community organizations and artists throughout the Twin Cities.



Artist Advisory Cohort

Xee Reiter is a self-taught artist specializing in watercolor, pen, and ink illustrations. As a first-generation Hmong American, you can largely find cultural influences in her works. Her artistic exploration includes but is not limited to portraiture, art journaling, mural art, typography, and calligraphy works. Xee lives in Saint Paul, Minnesota with her husband and three kids. You'll find her with sketchbooks, pens, and pencils doodling across the cities, from park trails to Hmong Village, as well as in her own backyard where she has started a mini urban farm and garden, complete with chickens and a wide variety of plants and vegetables. She has worked with local organizations such as TPT PBS, Minnesota Department of Health, Minnesota Public Radio, The Ordway, and Hmong Museum to connect community through her artistry.

Layers of Engagement



Open Houses - IAP2 Level Involve

Series of 3-4 progressive meetings

Listening Sessions

In-person listening sessions at each library

Community Surveys - IAP2 Level Involve

Series of progressive surveys

Library Design Project Ambassador Meetings - IAP2 Level Involve | Collaborate

Comprised of invited neighborhood groups, associations and youth leadership teens

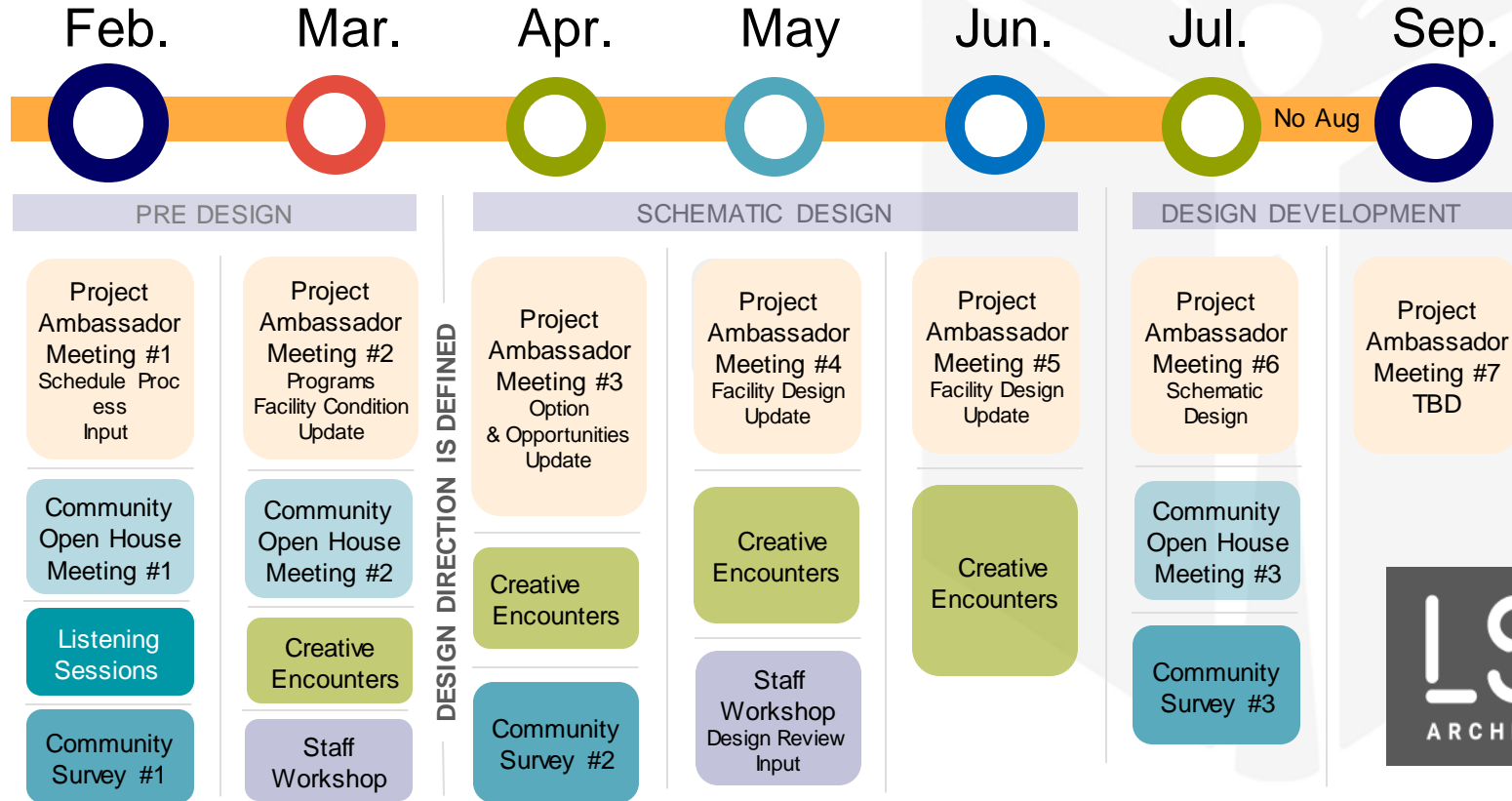
Artist Advisory Cohort | Creative Encounters - IAP2 Level Collaborate

Co Facilitators of Engagement, lead ideation on engagement sessions and create creative encounters within the community

Library Staff Input – IAP2 Level Collaborate

Other – TBD as process evolves

Community Engagement Timeline



Your Libraries





Hayden Heights Library

Gross Area

11,356 SF

Usable Public

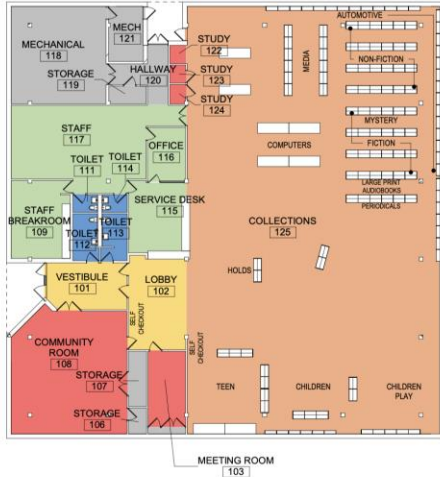
8,855 SF

2019 Visits

67,608

Assessment Big Picture

- Study Rooms do not meet accessibility
- Finishes are worn and dated
- No visual control of restroom at entry
- Staff restrooms do not meet accessibility
- High windowsill heights limit views in or out
- Window in staff workroom leaks
- Doors need to be replaced
- Single-story, wide-open, flexible space





Riverview Library

Gross Area

8,418 SF

Usable Public

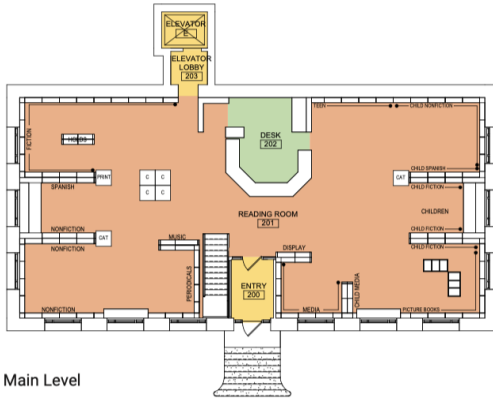
6,250 SF

2019 Visits

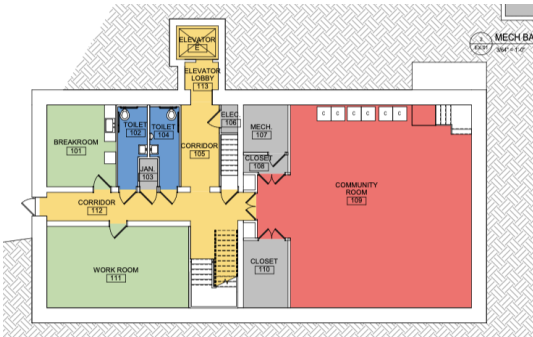
79,560

Assessment Big Picture

- Two story library
- Accessible entry is inequitable
- Approach to accessible entry does not meet accessibility
- Poor exterior sightlines to accessible entry are a security concern
- Building has an adequate floor-to-floor height of 12'
- Remote lower-level restrooms present major security challenge
- 1916 Carnegie Library; Historical Preservation Status



Main Level



Lower Level & Mechanical Basement



Hamline Midway Library

Gross Area

7,911 SF

Usable Public

5,045 SF

2019 Visits

87,777

Assessment Big Picture

- Two story library
- Accessible entry off the alley is inequitable
- Building is lacking mechanical ventilation
- Floor to floor height of 9'-6" is limiting
- Lower-level hallway width and height do not meet accessibility requirements
- Structural system shows signs of deterioration in visible areas
- Remote lower-level restrooms present major security challenges
- Beautiful stone archway could be retained or re-used



Main Level



Lower Level

Check In & Your Input

Go to
www.menti.com

Enter the code
4828 1899



Or use QR code

Your ideas

Go to
www.menti.com

Enter the code
4828 1899



Or use QR code

Via the Mentimeter Survey:

All 3 library designs will aim for this goal: co-create with neighbors a safe, inviting, affirming, and comfortable library for people of all cultures, abilities, and communities.

Rank your priorities to help meet that goal.

- ☐ A space that reflects the **cultures** in my community
- ☐ Improve **accessibility** for people with mobility challenges
- ☐ Provide access to **social service programs**
- ☐ Create **sustainable and environmentally friendly** libraries
- ☐ Preserve architectural **design elements**
- ☐ Add community meeting/program **spaces** and study **rooms**
- ☐ Separate quiet & loud spaces **acoustically**
- ☐ Enhance **play & learn** in children's areas
- ☐ Improve **technology** in meeting rooms and for working/studying at the library
- ☐ Create dedicated **teen space**
- ☐ Create **connections to nature** and outdoor space

More engagement & thanks!

- Continue to follow the projects progress and sign up for the **newsletter**: www.sppl.org/transforming-libraries.
- Watch for and respond to **Survey #1** at the website above, our newsletter, or at the library.
- Watch for **Open House #2** announcement next month.
- Join an **in-person listening session** at your library.
- Anything else you wanted to share? Please **share in the chat**.