

# Welcome



# Land Acknowledgement



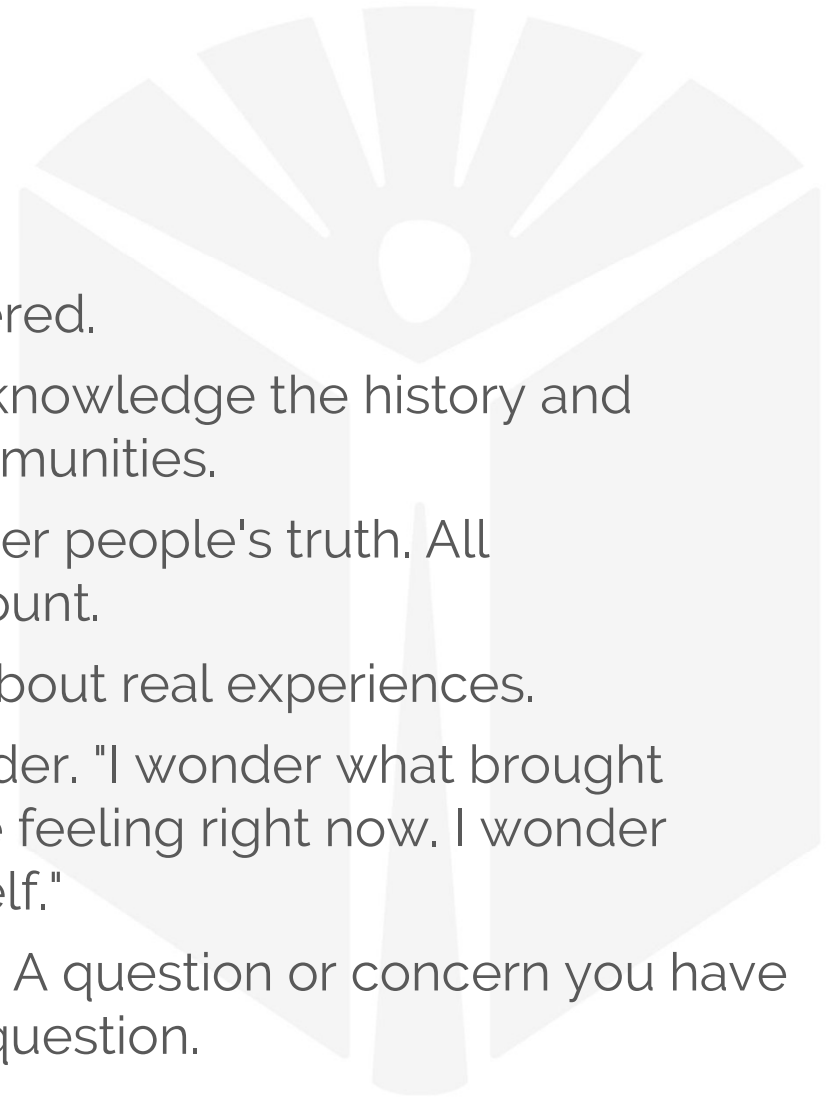
Every community owes its existence and vitality to generations from around the world who contributed their hopes, dreams, and energy to making the history that led to this moment. Some were brought here against their will, some were drawn to leave their distant homes in hope of a better life, and some have lived on this land for more generations than can be counted. Truth and acknowledgment are critical to building mutual respect and connection across all barriers of heritage and difference.

We begin this effort to acknowledge what has been buried by honoring the truth. We are standing on the lands of the Dakota People. We acknowledge the Ojibwe and Ho Chunk people who also call this place home. We pay respects to their elders past and present. Take a moment to consider the treaties made by the tribal nations that entitle non-Native people to live and work on traditional Native lands. Consider the many legacies of violence, displacement, migration, and settlement that bring us together here today.

Please join us in using this community space as a place for growth and reconciliation. We invite you to use this moment together to examine our cultural narratives that perpetuate violence against indigenous communities and work to create space to engage with and learn from indigenous community members.

# Agreements

- Be present as fully as possible
- Keep the conversation community centered.
- Engage with humility. Recognize and acknowledge the history and inequities that impact our individual communities.
- Share your truth in ways that respect other people's truth. All contributions and opinions matter and count.
- Venture to be honest, with gentleness, about real experiences.
- When the going gets tough, turn to wonder. "I wonder what brought them to this belief. I wonder what they're feeling right now. I wonder what my feeling teaches me about myself."
- If possible, speak up during the meeting. A question or concern you have might help someone else with a similar question.

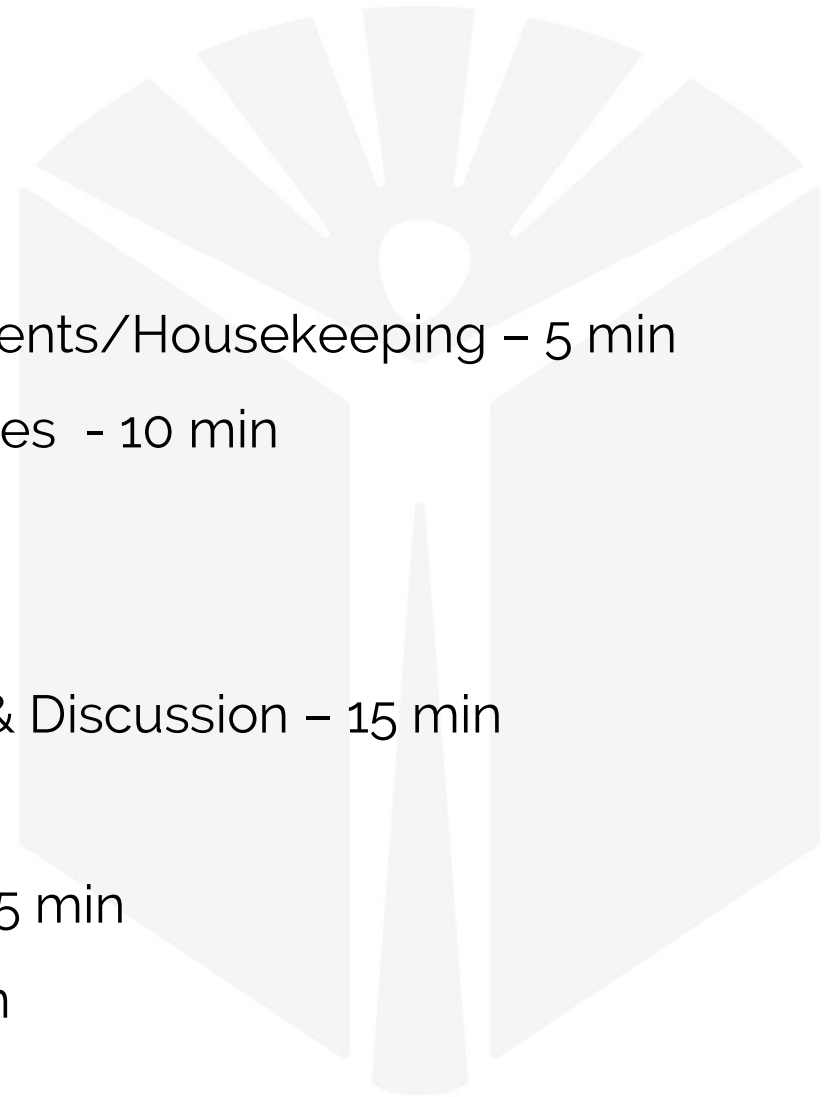


# Housekeeping/Teams

- To show the conversation, click on the speech bubble
- Share reactions or raise your hand with hand/smiley button
- Feel free to turn your video on, but it's ok not to. Take breaks as needed.
- Please stay on mute unless talking.
- To enable captions, click on the three dots, choose 'turn on live captions.'

# Agenda

1. Welcome/Acknowledgement/Agreements/Housekeeping – 5 min
2. Intros & Review of Roles & Responsibilities - 10 min
3. We heard from you – 10 min
4. Facility Assessments Review – 5 min
5. Program & Unique Decisions Overview & Discussion – 15 min
6. Engagement Recap – 10 min
7. Engagement Next Steps (Breakouts) – 15 min
8. Review of Timeline & Next Steps – 5 min
9. What's on your mind? – (remainder+)



# Introductions

- Name/Pronouns



# Roles & Responsibilities



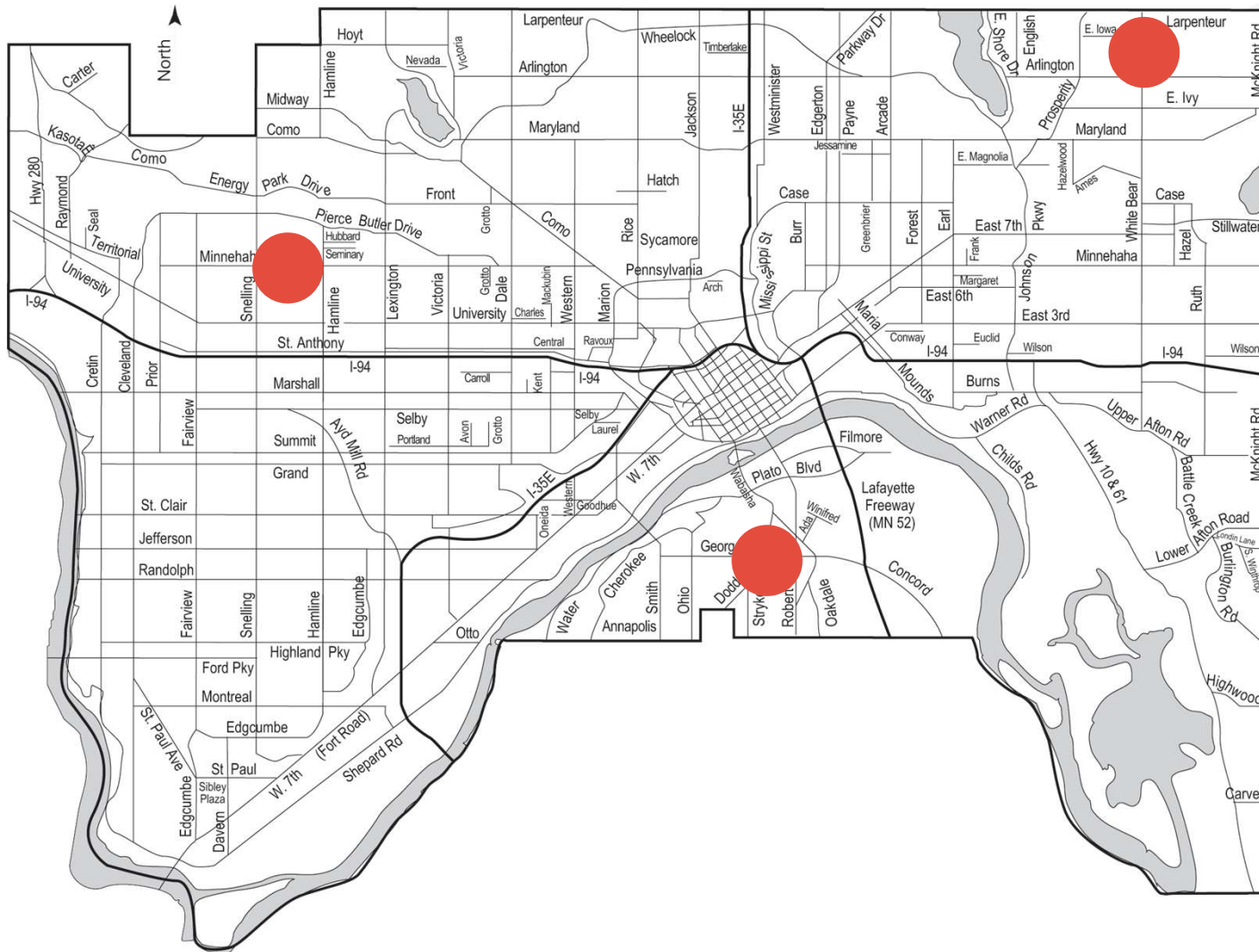
## IAP2 Role: Involve / Collaborate

- **Give recommendations and insight** to options for the library, the facilities design, and the schematic design.
- **Hear updates** from the design team and consultants and advise on design to ensure community input and collaboration.
- **Connect** SPPL with existing community partners and assets.
- **Share** information with your communities, neighborhoods, and networks.
- **Direct** interested neighbors and stakeholders to information, resources, and engagement opportunities.
- **Promote** engagement opportunities and project updates to neighbors and other stakeholders.

**We heard from  
You...**







## What:

Engage community in co-creating schematic designs for the transformation of 3 neighborhood libraries that are well loved, well used, and well worn.

A word cloud centered around the themes of 'Inclusive Connection' and 'Community'. The words are arranged in a circular pattern, with the largest words being 'Inclusive Connection' and 'Community'. Other words include 'Fun', 'Joy', 'Giggling', 'Different people', 'Helpful', 'Success', 'Inviting', 'Resourceful', 'Everyone', 'Future', 'Welcoming', 'Efferescence', 'Books', 'Reading', 'Potential', 'Bright', 'Inspiration', 'Refuge', 'Vibrant', 'Collective', 'Growth', 'Knowledge', 'Accessibile', 'Useful', 'Accessible', 'resources', 'Innovation', 'Kids', 'Safe', 'Knowledge', 'Energy', 'Celebration', 'Joy', 'Familiar', 'Inclusion', 'Comfort', 'Equity', and 'Reading'.

Comfort

Familiar

Inclusion

Inclusive

Connection

Fun

Useful

Accessible

resources

Innovation

Kids

Safe

Knowledge

Energy

Celebration

Joy

Collective

Vibrant

Knowledge

Growth

Joy

Giggling

Different people

Helpful

Success

Inviting

Resourceful

Everyone

Future

Welcoming

Efferescence

Books

Reading

Potential

Bright

Inspiration

Refuge

Community

Equity

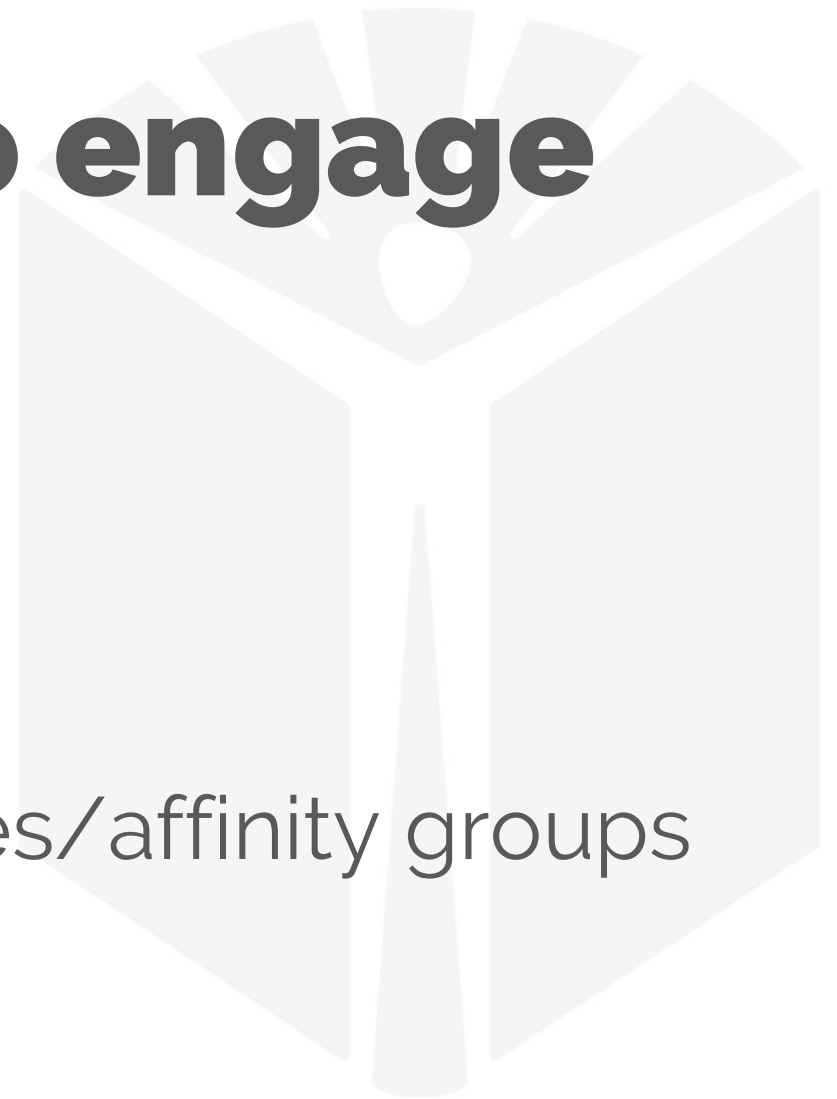
Reading

# Your ideas



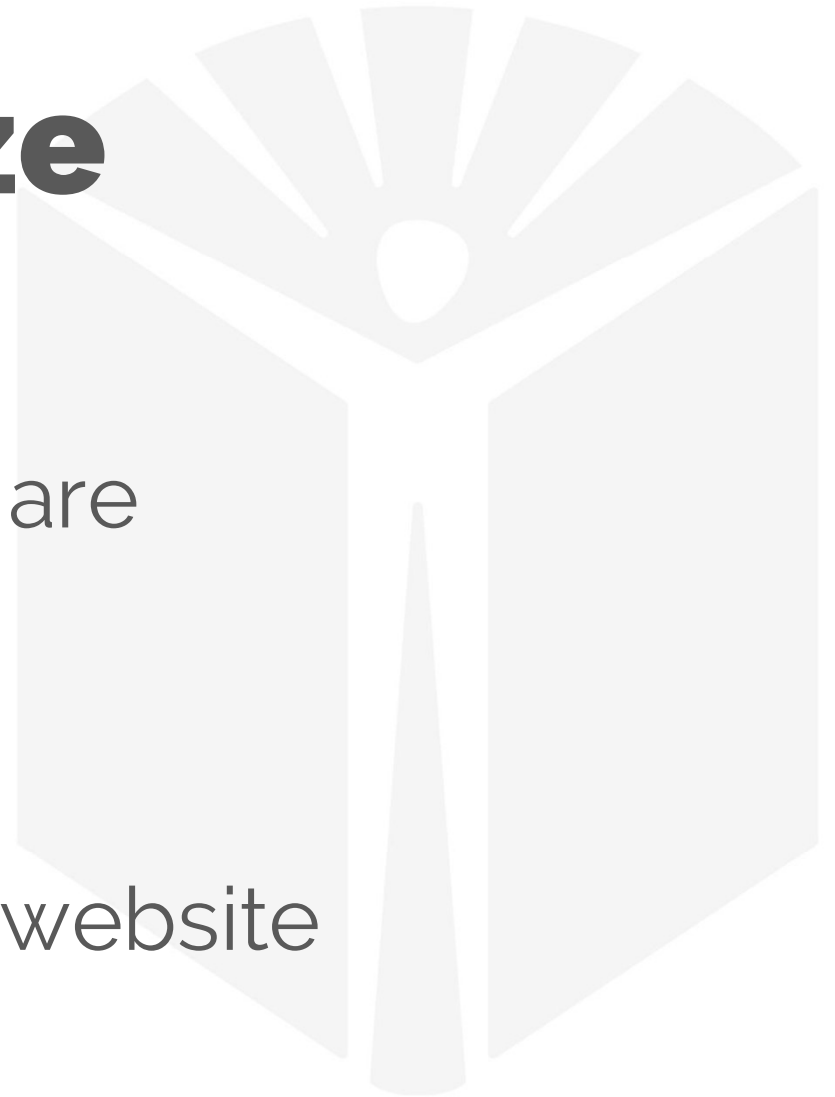
# Who/Where to engage

- Partner Organizations
- In our libraries
- In our neighborhoods
- Seek out people by  
needs/interests/cultures/affinity groups



# How to publicize engagements

- Go to where the people are
- Flyers
- Ambassador Outreach
- Neighborhood papers
- Engage with interactive website

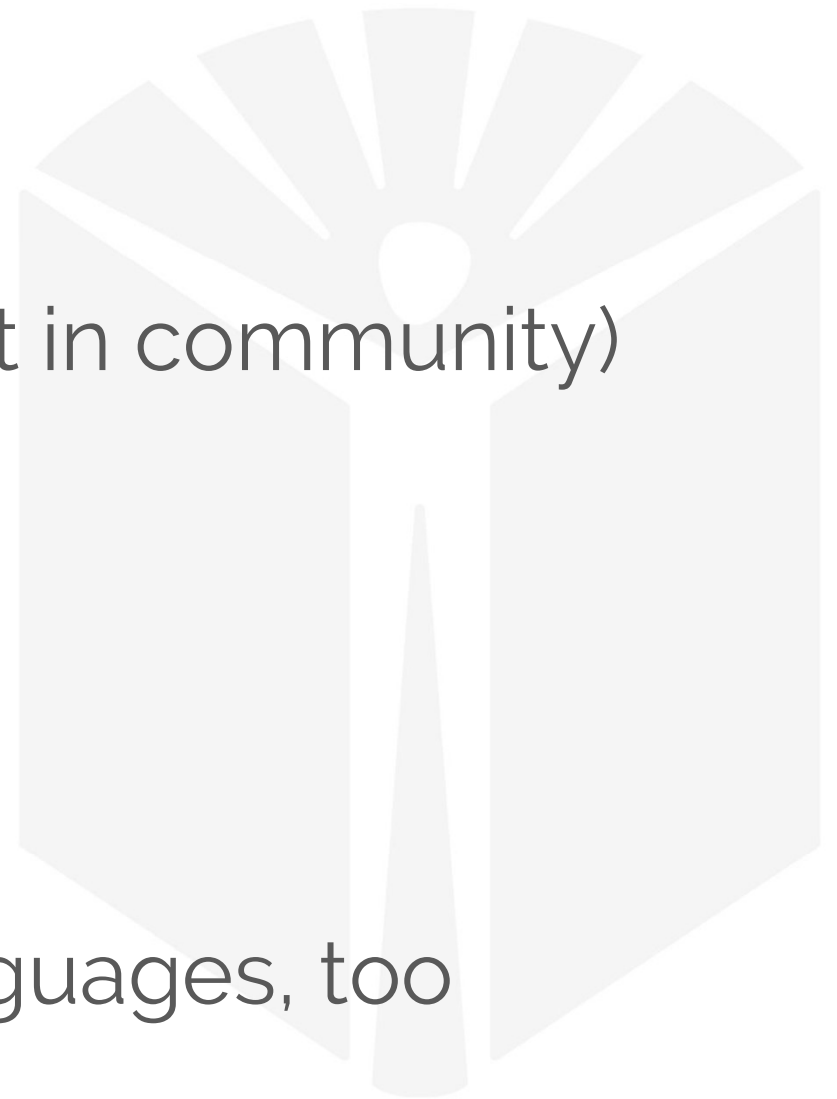


# How to frame the engagement process

- Be clear about what ideas are viable and are not
- Be as transparent as possible
- Don't ask for ideas we can't implement – set expectations appropriately

# How to host

- Events (in library and out in community)
- TikTok
- Meetings
- Food
- Pop-ups
- Talking circles
- Offer in non-English languages, too



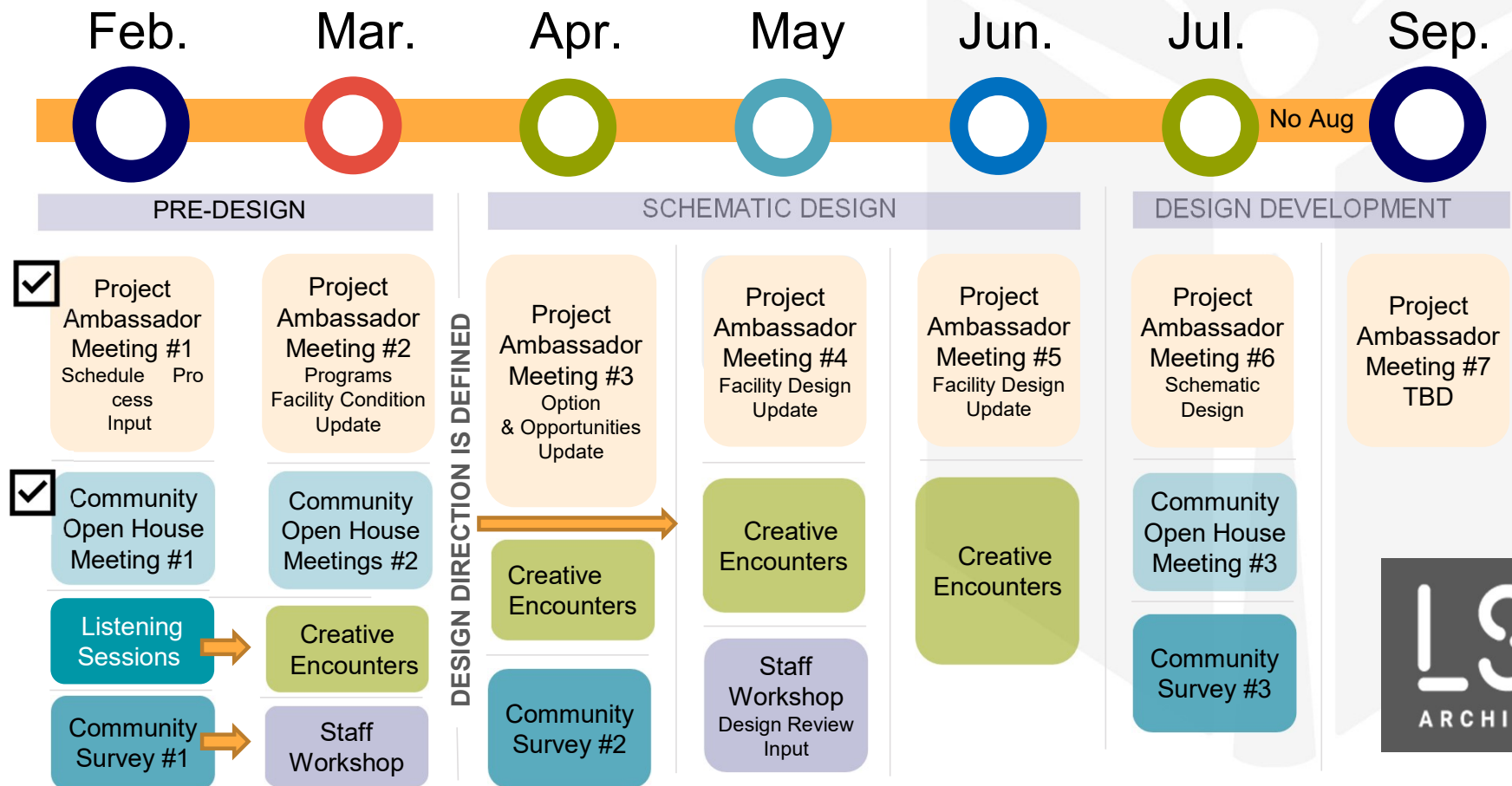
# What We Will Deliver



- Safe, inviting, affirming, and comfortable libraries for people of all cultures, abilities, and communities
- Improved accessibility
- Additional spaces and study rooms for communities to gather, work, study, and collaborate
- Separation of quiet & loud spaces
- Enhanced play & learn space
- Technology-rich environments



# Community Engagement Timeline



# **Facility Assessments**





# Hayden Heights Library

**Gross Area**

11,356 SF

**Usable Public**

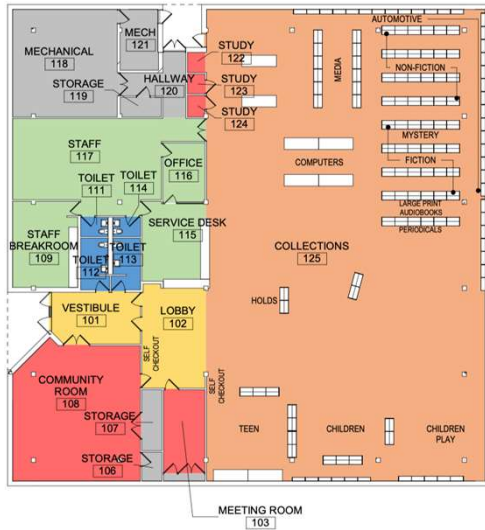
8,855 SF

**2019 Visits**

67,608

## Assessment Big Picture

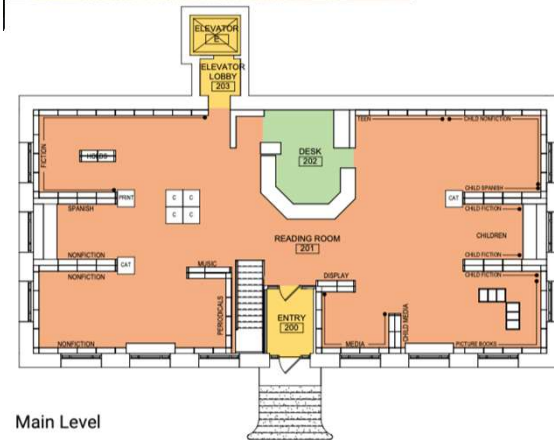
- Study Rooms do not meet accessibility
- Finishes are worn and dated
- No visual control of restroom at entry
- Staff restrooms do not meet accessibility
- High windowsill heights limit views in or out
- Window in staff workroom leaks
- Doors need to be replaced
- Single-story, wide-open, flexible space



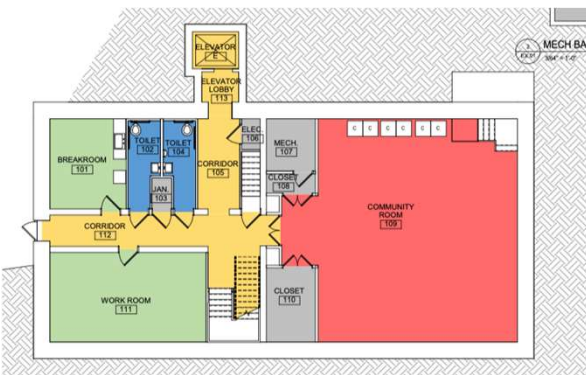


# Riverview Library

Gross Area	Net Usable	Net Usable Public
8,418 SF	6,380 SF	6,250 SF



Main Level



Lower Level & Mechanical Basement

## Assessment Big Picture

- Accessible entry is inequitable
- Approach to accessible entry does not meet accessibility
- Poor exterior sightlines to accessible entry are a security concern
- Replace Mechanical systems that have reached their useful life
- Remote lower-level restrooms present major security challenge
- Carnegie Library; Historical Preservation Status

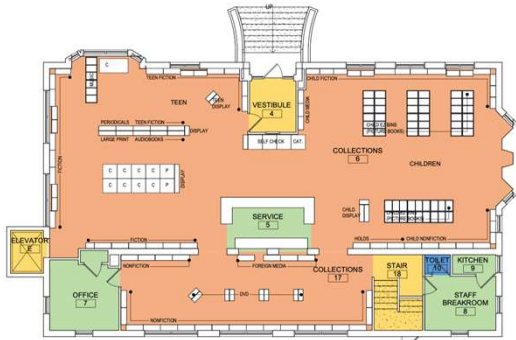


# Hamline Midway Library

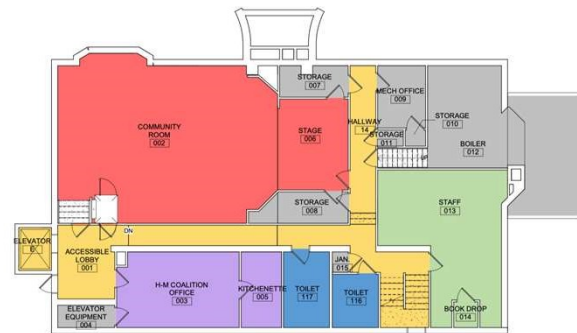
**Gross Area**  
7,911 SF

**Usable Public**  
5,045 SF

**2019 Visits**  
87,777



Main Level



Lower Level

## Assessment Big Picture

- Two story library
- Accessible entry off the alley is inequitable
- Building is lacking mechanical ventilation
- Floor to floor height of 9'-6" is limiting
- Lower-level hallway width and height do not meet accessibility requirements
- Structural system shows signs of deterioration in visible areas
- Subterranean water infiltration is the likely cause of foundation degradation and wet walls and floors
- Remote lower-level restrooms present major security challenges
- Select Architectural features could be retained or re-used

# Program & Unique Decisions



## **Hamline**

- Expansion options

## **Riverview**

- Accessibly entry
- Bathrooms
- Outdoor space

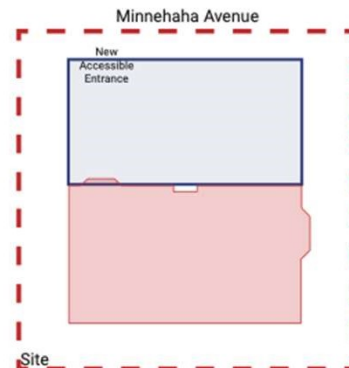
## **Hayden Heights**

- Partner space
- Outdoor space



# Hamline Concepts

## 1. Addition to building in front of existing building



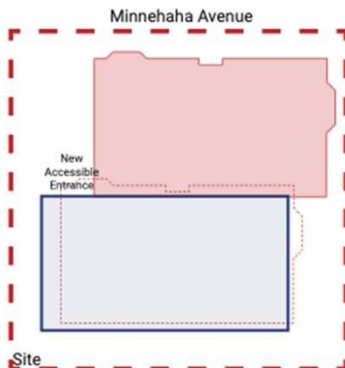
Local Precedent 1



Giddens Learning Center  
Hamline University, Saint Paul



## 2. Move building to new location on site and addition

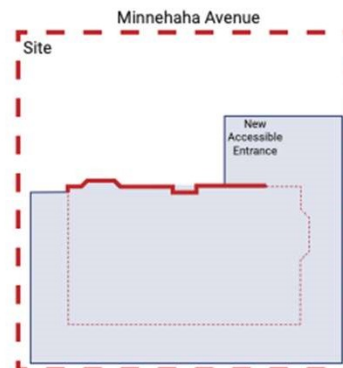


Local Precedent 2



Moving of the Schubert Theater  
Minneapolis

## 3. Preserve facade on new building

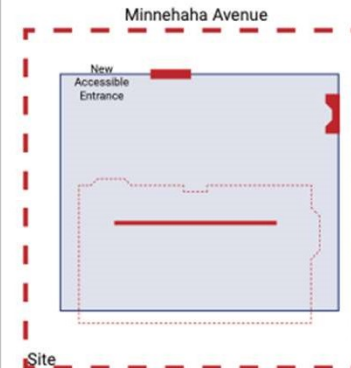


Local Precedent 3



Pioneer Hall  
University of Minnesota, Minneapolis

## 4. Reuse architectural features and materials in new construction



Local Precedent 4



Above: McNamara Alumni Center  
University of Minnesota, Minneapolis  
Antoine Predock with key LSE Team Members

# Open House Recap

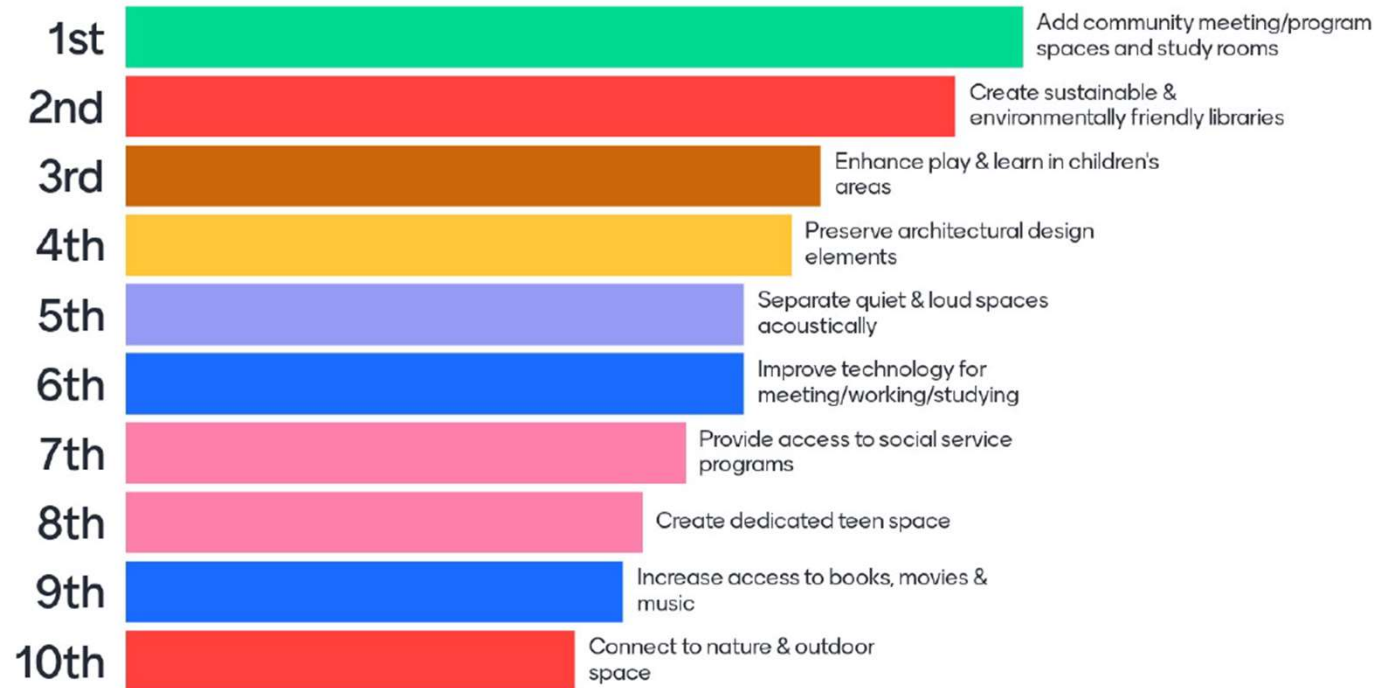
Describe your community library in one or two words.





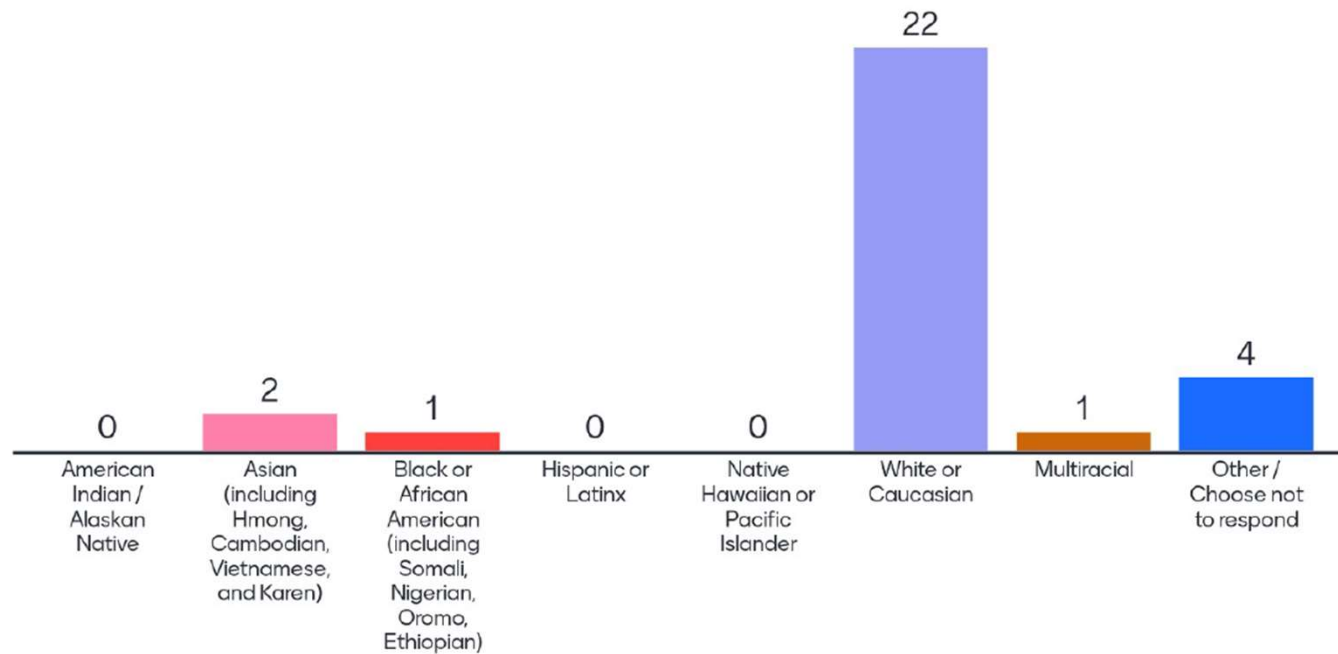
# Open House Recap

Rank your priorities



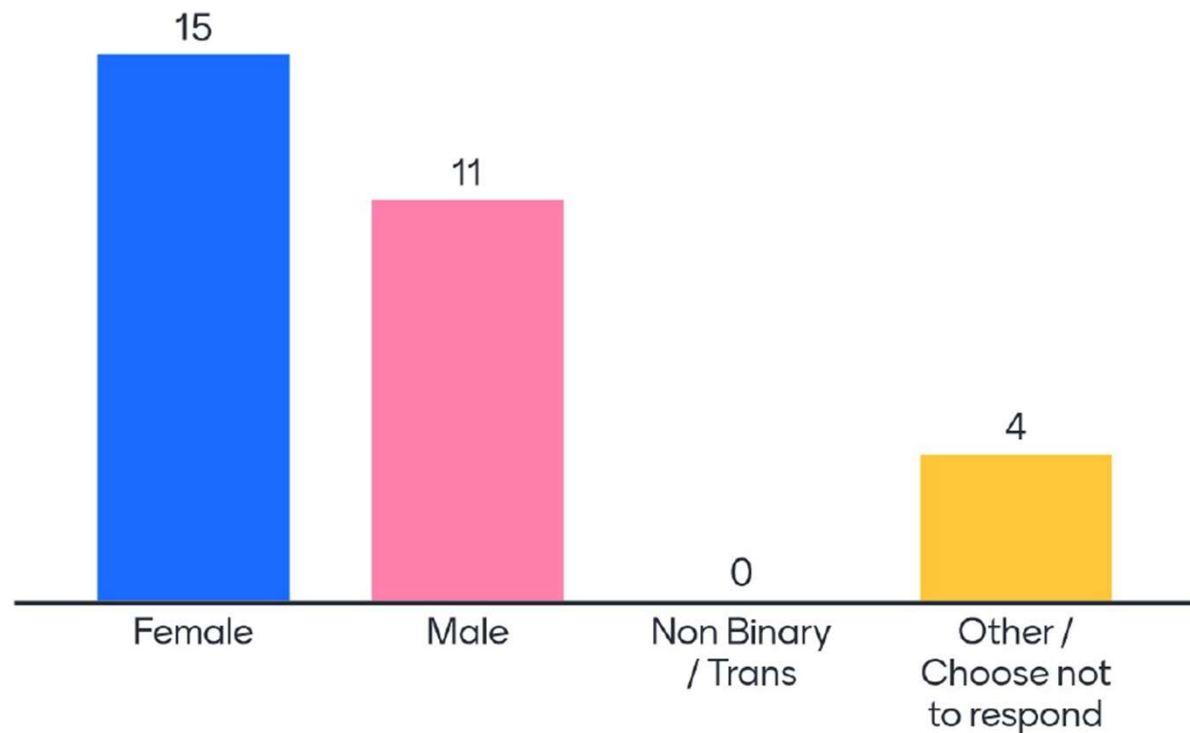
# Open House Recap

How do you identify your race/ethnicity/cultural group?



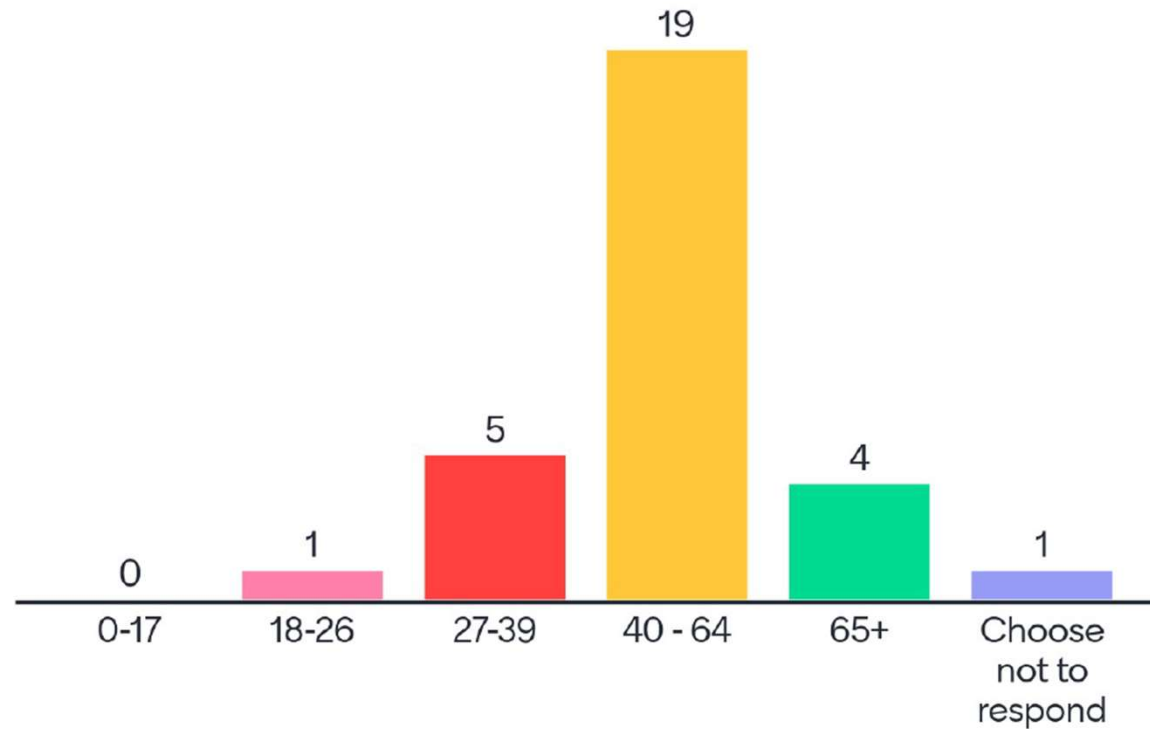
# Open House Recap

How do you identify your gender?



# Open House Recap

## What is your age



# **Listening Session @ Hamline Recap**



# What is one way to make the library feel more welcoming to all?

It  
Is

1. STAFF IS THE BEST  
2. LIBRARY IS VERY WELCOMING  
3. MORE ACCESS FOR  
4. BUILDING IS WELCOMING

one entrance  
for all to  
access

More  
Movable  
Space

I have  
always  
felt welcome  
but the  
front steps  
are a challenge  
for many

Arch used  
Arch used  
helps to stabilize  
the building

Make  
space  
in the  
large place

New  
Modern  
Building  
but with  
Character

More connected  
community  
space to common  
library

I wish it  
had a stronger  
street presence  
It gets lost between  
the neighboring building

Roll up doors  
italian doors?

strollers, elders.

why don't the  
stairs lead outside  
to the garden?

Have you ever considered  
- making entry entry  
more attention?  
- has falling security  
- more indoor garden?  
- more outdoor garden to  
let us 2nd floor  
- making building not  
- a bit of a simple greeting  
space?

Keep warm  
earth tones like  
wood...

Bright inviting  
entrance that  
is accessible  
to everyone

Color/art/imagery  
that indicates it's  
a community building  
space + not "only"  
books (e.g. traditional  
idea of library)

MODERN  
BOOKS  
READ!

Larger  
windows  
so we can  
see outside!

Dignified,  
easy  
access to  
all spaces,  
for all,  
no exceptions

Save as much  
of the original  
building as possible

A good case space  
but too open space  
without

• windows  
• big space  
• bigger drawing  
table

public art that's  
made with/by  
community that  
reflects a wide  
range of cultural  
experience

Maybe add a  
child care room?  
I think a variety  
of spaces + more  
high bright island  
post-present/futuristic  
elements!

agree with  
more windows  
natural light

more windows  
to see in/out  
(+ that there's  
activity inside)

How it is the  
same books and  
the cushions  
and some things

It would be  
wonderful to have  
more independent  
study areas

Accessibility  
is essential  
=====



# What is the most important thing you want us to know about the library?

It is a beloved  
community asset  
and is more than  
a building

we need  
IT  
we appreciate  
it

A place for  
learning  
solitude  
sharing

It should  
be focused  
on the future  
of the community

It reflects  
the history of  
the community  
but can be  
adapted to the  
future

It was advocated  
for by comm.  
needs from  
the beginning  
& loved.

SAVE AS  
MUCH OF THE  
ORIGINAL Bldg.  
AS POSSIBLE

The community  
loves the history  
of this building  
and would like  
to keep it as  
original as possible

Beautiful but  
neglected  
community asset!

We need  
quiet small +  
large meeting  
spaces and  
places where  
children can  
be noisy

Building is beautiful  
but it's so small  
- how could it  
be made larger -  
an addition??

Will be  
utilized more  
with better  
facilities.  
Midway deserves  
better!

It is  
disturbing to  
see how this  
building has  
been neglected -  
shame on you!

IT IS A  
REALLY  
GOOD ONE

This building is an  
important part of  
the neighborhood  
and must be  
preserved!

a library is an  
organic system  
not a building  
a building can be  
in service to the  
system or hinder it.

This building  
is an essential  
part of the  
history of this  
neighborhood.

library for  
future =  
max flexible  
form

This library  
prioritizes children  
and freedom of  
movement. My children  
feel at home here.

The library's  
history of  
colonialism/holding  
knowledge is  
harmful - how to  
repair w/ this project?

I love the beauty  
this building brings  
to the community,  
however it is in  
clear need of some  
much needed repairs

# Libraries are Resilience Centers. How does, or could, the library positively impact your life?

A meeting place.  
A community  
touchstone.  
A place for reading,  
learning,  
community building.

1. A place to gather  
as neighbors and as  
a family without  
expectation to spend  
\$  
2. A place for community  
members to access  
resources and information

A place for  
meeting  
A place for  
learning  
Serendipity!

In times of need,  
the library helped  
feed & shelter my  
family via internet  
& printer access

Has resources  
to improve your  
life - librarians,  
web, books, etc..  
vs  
fake news.

host  
more varied  
activities  
for me & my  
family (incl. kids)

Reliable  
destination  
for families

By preserving a  
little bit of  
St. Paul history

TORREAD  
MORE KIDS


More resources,  
books, other  
learning materials  
- new technology

More space  
equals  
more  
possibilities  
& opportunities  
for community.

We seek have a chance  
to build something  
together, as a community,  
in a different little, white  
space, that is supporting  
the building. Something  
that has been created for  
the future.

The library  
is a place  
where all  
can feel less  
alone +  
more connected  
+ supported

As a family who  
has been lower  
income - having  
access to books,  
videos, music has  
been essential for us

The library was  
invaluable to me  
when I was unemployed  
I went there to learn  
about resources, it was  
what I needed. 



# What other ideas do you have to get input that reflects the diversity of the community?

Open meetings with feedback to community

Meetings with a variety of groups

• hang out at local businesses  
• take walking tour  
• sitting / standing and asking questions

Interview students at nearby SPPS to get input on what they like/don't like about Lib.

Talk to folks at Hamilton Elementary, Golden Elementary, LEAF, and the public library. Check out the website for the second day, usually that's the best time to find out what's going on.

Door knock - Seek out opinions from those not normally engaged

Answer all the questions that were posted online

Go out to community groups and events to get feedback and ideas. Don't just rely on people to come to events. I think this is happening but should be out in the world (I think so.)

Meetings with ALL ages

Block Party!

Encourage community use of auditorium.

Enlist a volunteer street team to talk to/ survey local businesses + neighbors

GENUINE ENGAGEMENT SHOULD BE A COMMUNITY-DRIVEN PROCESS NOT TOP DOWN FROM STPL

diversity of age feels important - particularly voices of 12-30 yr olds

Involve youth at every step in the process. A welcoming, modern library can also function as a community safety strategy. Give youth a safe, welcoming place to go + be seen.

A QUIET READING PLACE!

GO TO OTHER GROUPS' MEETINGS/ HANG OUTS + ASK

Seek input from orgs serving specific groups - how would they want to use the space

prioritizing trauma informed design

engage renters

preserve indigenous history / honor traditions + knowledge somewhere in design

# Listening Session @ Hamline Recap

**"It has a great history that should be remembered and celebrated"**

**"A building that doesn't require folks with assisted mobility devices to use only a back door"**

**Right now the front stairs make anyone with a mobility challenge feel like a second class citizen..."**



**"A safer feel for staff not having to manage two stories"**



**"... a room for a children's story time that isn't in a regularly flooding space!"**

# Listening Session @ Hamline Recap

- I think keeping elements of the existing building is a fine **compromise**. It doesn't impede with making this the best library it can be for the **future** of the community.
- I like the idea **preserving elements** if feasible and makes economic sense look for inclusion of quiet spaces.
- **Adopt green features**. Design features for those with disabilities.
- Prioritize **reusing materials from old building** – light fixtures, windows, fireplace, front façade, even bricks from exterior structure.
- **Preservation** of as much of the existing building should be the goal. Please do not give us another Rondo-style library eyesore.
- I think a new building with some homage to the old façade would be great. **More modern space** is best use of the funds for long term use.
- **Mod and eclectic** and mindful of **past and future!**
- Don't spend extra money on moving or saving building. Do what is **best for the future**.
- Please consider **a completely new building** that has 2 stories and meeting rooms, gathering space, and fully accessible.
- I am glad that the ideas being put forward **will incorporate architectural elements** of the existing building.
- Option three looks amazing. A new accessible space while still keeping the original outside feel.
- The idea of **moving the building toward the street** and adding the new features behind and under seems very exciting to me.
- **Save the original building** and keep the façade up front.
- Please **maintain the beautiful exterior**.... It has clearly been neglected and is in need of repair and updating but **please avoid an ultra modern box...**
- **This library values children** and their freedom of movement. Almost half of the library has been dedicated to children. Please keep this a value that the neighborhood wants to keep at the heart of its library. Thank you for your work and consideration of what is important to the community.
- I have never encountered 10 or 12 others using the library and usually less. The schools already have good libraries so **what demand!**
- I am a Midway neighbor, SPPS parent... I am interested in using this opportunity to create something **truly transformational** on **another site**.
- **Add a second floor** or third and fourth for housing and density.
- Move building to new location on site and addition? **This seems difficult and not worth it?**
- Preserve façade on new building if this is landscaped in useful way.



# Listening Session @ Hamline Recap



# Next Up: SURVEY



Breakout (10 mins)

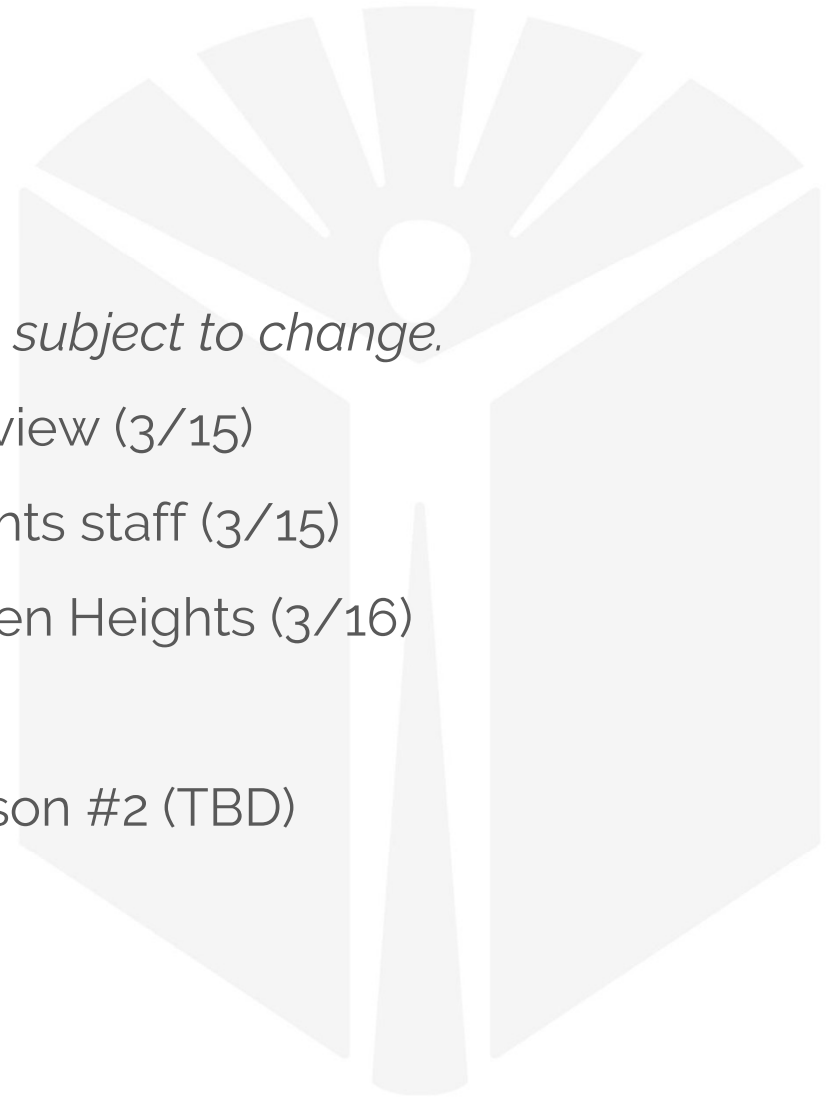
How can you help us organize?

Where do you go to be in community?

# Next Up

*Please confirm all dates on SPPL.org – they are subject to change.*

- Transformation Listening Session at Riverview (3/15)
- Staff Workshop w/LSE with Hayden Heights staff (3/15)
- Transformation Listening Session at Hayden Heights (3/16)
- Community Survey (3/11 - 3/28)
- Community Open House Meetings in-person #2 (TBD)
- Artist Creative Encounters (TBD)



# Next Steps for this Group



- Help us ensure we have representation from historically under-represented groups in the survey.
  - Please commit to sharing with an ask of at least 15 community members and posting it widely.
- Continue to follow the projects progress at [www.sppl.org/transforming-libraries](http://www.sppl.org/transforming-libraries)

**What's On Your  
Mind?**

