

# Welcome



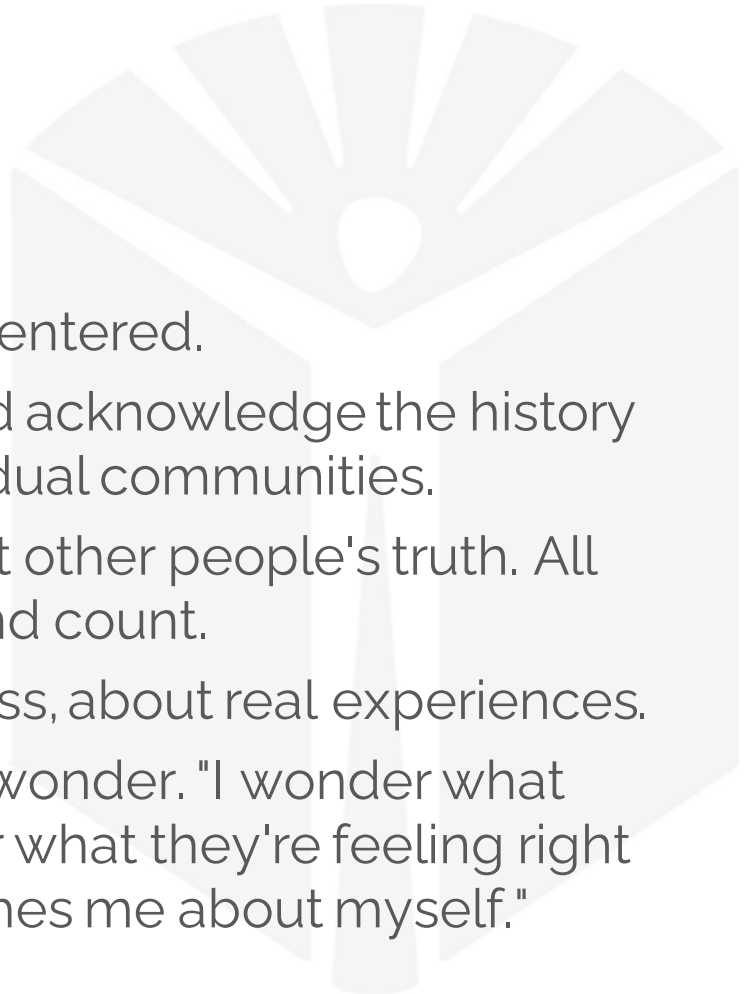
# Agenda

1. Rules of Conduct – 2 minutes
2. Introductions – 15 minutes
3. Why you are here - Roles and Responsibilities – 3 minutes
4. What brought us to this point – 15 minutes
5. Introduction to the Team and Process – 15 minutes
6. Your ideas for broad community engagement? - 15 minutes
7. Your Libraries – 15 minutes
8. Questions / Comments – 5 minutes
9. Homework assignment – 5 minutes



# Rules of Conduct

- Be present as fully as possible
- Keep the conversation community centered.
- Engage with humility. Recognize and acknowledge the history and inequities that impact our individual communities.
- Share your truth in ways that respect other people's truth. All contributions and opinions matter and count.
- Venture to be honest, with gentleness, about real experiences.
- When the going gets tough, turn to wonder. "I wonder what brought them to this belief. I wonder what they're feeling right now. I wonder what my feeling teaches me about myself."



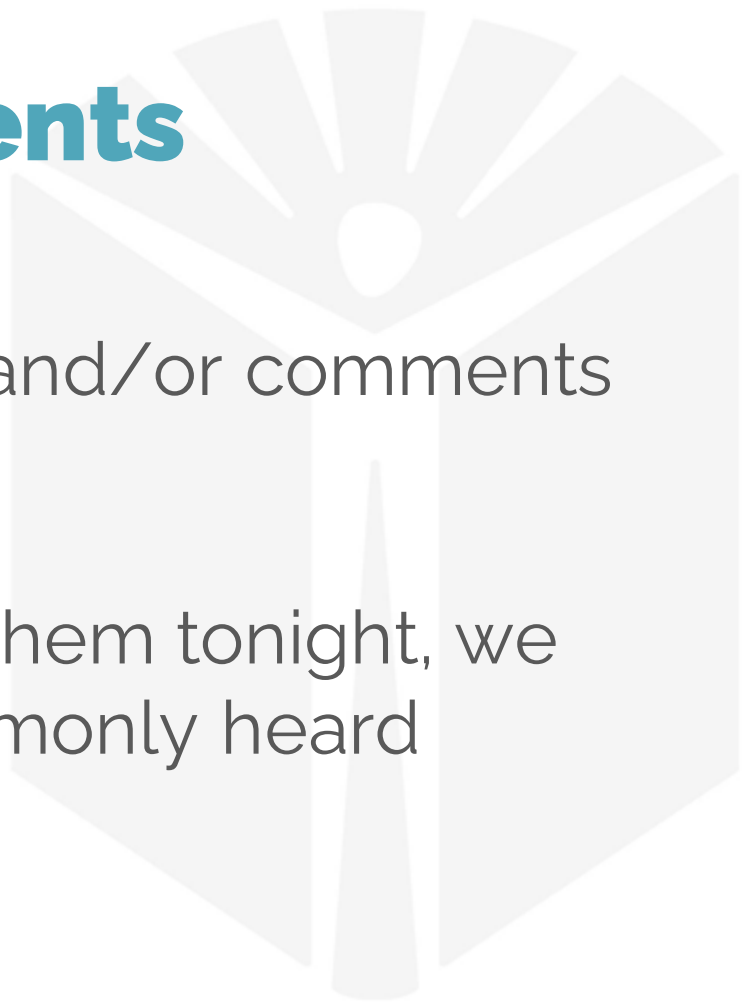
# Housekeeping/Teams

- To show the conversation, click on the speech bubble
- Share reactions or raise your hand with hand/smiley button
- Feel free to turn your video on, but it's ok not to. Take breaks as needed.
- Please stay on mute unless talking.
- To enable captions, click on the three dots, choose 'turn on live captions.'

# Questions | Comments

Please add your questions and/or comments to the chat.

If we are not able to get to them tonight, we will add them to list of commonly heard questions and answers.



# Introductions

- Name
- Organization or Group
- What comes to mind, one to two words, when you think of a community library?



# Scope of our Work

## Why/How/What

- WHY: As public spaces, Saint Paul libraries are a unique and essential element to our city's social infrastructure. As we reckon with the dual pandemics of COVID-19 and systemic racism, we have an opportunity to reimagine, redesign, and invest in community libraries that meet the needs of residents now and for the next generation.
- HOW: Work together across similarities and differences, to co-create library designs and case for investment that reflect a community-informed vision: spaces that are safe, inviting, affirming, and comfortable for people of all cultures, abilities, and communities.
- WHAT: Engage community in co-creating schematic designs for the transformation of 3 neighborhood libraries that are well loved, well used, and well worn.

# Why you are here

## Roles Responsibilities

- Meet monthly to give recommendations and insight to options for the library, the facilities design, and the schematic design.
- Hear updates from the design team and consultants and provide direction and decision-making on design to ensure community input and collaboration.
- Help SPPL map existing community partners and assets.
- Serve as information ambassadors for the library design work underway in the Hayden Heights, Hamline Midway, and West Side neighborhoods.
- Feel confident directing interested neighbors and stakeholders to information, resources, and engagement opportunities.
- Help promote engagement opportunities and project updates to neighbors and other stakeholders.

# IAP2 spectrum



	INFORM	CONSULT	INVOLVE	COLLABORATE	EMPOWER
PUBLIC PARTICIPATION GOAL	To provide the public with balanced and objective information to assist them in understanding the problem, alternatives and/or solutions.	To obtain public feedback on analysis, alternatives and/or decision.	To work directly with the public throughout the process to ensure that public concerns and aspirations are consistently understood and considered.	To partner with the public in each aspect of the decision including the development of alternatives and the identification of the preferred solution.	To place final decision-making in the hands of the public.
PROMISE TO THE PUBLIC	We will keep you informed.	We will keep you informed, listen to and acknowledge concerns and aspirations, and provide feedback on how public input influenced the decision.	We will work with you to ensure that your concerns and aspirations are directly reflected in the alternatives developed and provide feedback on how public input influenced the decision.	We will look to you for advice and innovation in formulating solutions and incorporate your advice and recommendations into the decisions to the maximum extent possible.	We will implement what you decide.

# Saint Paul Public Library

A faint, light gray background logo is visible on the right side of the page. It features a stylized sunburst or starburst design at the top, with several triangular rays extending downwards. Below the sunburst is a large, open book, with its pages represented by several overlapping, slightly curved rectangular shapes.

**Mission** We welcome all people to connect, learn, discover and grow.

**Vision** We imagine a Saint Paul where all people feel seen, safe, and welcome. We imagine a city where libraries bring people together to experience hope, joy, and creativity through learning.

**Our Values** The Library belongs to the people of Saint Paul. We are your Library and you — our library users — shape our work. The following values guide our work.

- We believe that learning is a human right.
- We believe in curiosity.
- We believe in connection.
- We believe in the power of belonging.

# Why invest in libraries

Investing in the libraries / public realm can:

- Be a catalyst for long-term change in communities that have suffered from systemic racism, disinvestment, devaluation and stigma. (Reimagining the Civic Commons, 2021.)
- Positively impact multiple dimensions of social wellbeing—in particular, community health, school effectiveness, institutional connection, and cultural opportunity. (Institute of Museum and Library Services, 2021.)
- Increase:
  - children's attendance at library events by 18%
  - children's checkout of items by 21%
  - total library visits by 21%
- Increase visits improve children's test scores in nearby school districts. (Federal Reserve Bank of Chicago, 2021.)

# What we heard 2018



Our community wants their libraries to:

- Focus on young people and families.
- Hold space for both quiet and loud activities.
- Foster safety and belonging
- Program beyond books and buildings
- Understand the structural, cultural, and financial barriers to using libraries.

**2018-2022 STRATEGIC GOAL:** Invest in spaces that are safe, inviting, affirming, and comfortable for people of all cultures, abilities, and communities.

# What we heard 2019-2020

We talked with our community as we assessed the condition & function of our facilities. Our community told us:

- The library is a place for exposure to new things and people and a place to have connections with other people.
- They feel pride for their neighborhood library.

Our community also told us:

- Saint Paul Public Library facilities are falling behind their peers.
- Outdated buildings struggle to support high use.

Libraries in Saint Paul are well loved, well used, and well worn.

# Facilities Vision

Imagine gathering spaces in our communities for neighbors to meet and connect, for job seekers to access WiFi and resume help, for children to discover and learn through play, and for community members to work, study, and access services. These free, accessible spaces that welcome everyone exist in our public libraries. They are **neighborhood resilience centers**.



# CO-CREATING A VISION TO **TRANSFORM LIBRARIES**

2018

Community engagement to shape the strategic direction



2019

Launched new mission, vision, values, and strategic direction

Community engagement to inform Facilities Direction



2020

Completed and shared Facilities Direction



2021

Community forum for Hamline Midway Library's transformation

Community members advocated for **City capital investment**

Secured **\$8.1 million in City funding** to transform Hamline Midway Library

Youth-led youth engagement to inform designs

Selected LSE as architect partner for community-informed schematic designs

2022

Launched artist-led **community engagement** and design process with LSE

Seek funding for transformation projects

# Investment Needs

**Transform three neighborhood locations** that are outdated, in poor condition, struggle to support high use, and have not been renovated 30+ years.

At all locations:

- **Improve technology**
- **Incorporate play and learn spaces**

**Hamline Midway Library**



**Hayden Heights Library**



**Riverview Library**



# The Opportunity



- Listen to neighbors and co-create a safe, inviting, affirming, and comfortable library for people of all cultures, abilities, and communities.
- Improve accessibility
- Add community meeting/program spaces and study rooms
- Separate quiet & loud spaces acoustically
- Enhance play & learn space and technology

# Friends Feasibility Study

- The Friends of SPPL have contracted with Creative Fundraising Advisers (CFA) to determine the feasibility, test the vision, case statement, financial goals, and readiness of running a library-focused capital campaign.
- CFA will conduct community listening sessions to learn what is important to them about the library.
  - Hayden Heights & Riverview library users
  - Families with children who utilize the library
  - Friends donors, and business leaders



CREATIVE  
FUNDRAISING ADVISORS

# Next Steps for the Project

- Continue to listen to the community through creative engagement
- Complete community-informed conceptual, schematic, and development design for the three priority locations.
- Seek funds to support priority branch transformations and systemwide priorities
- The Friends of SPPL complete feasibility study for future capital campaign.

# Firm Introduction



- Extensive Relevant Library Experience and Expertise
- Extensive Relevant Sustainability Experience and Expertise
- Minneapolis-based, Black-owned business
- Commitment to equity is deeply embedded into our practice

**LSE**  
ARCHITECTS

# Select | Relevant



George Latimer Central Library



Sumner Library



Sun Ray Library



Adams Spanish Immersion



Oxboro Library - HC



Highland Library - Before and After



Webber Park Library - HC



Midway YMCA



North High School

# Key LSE Team



**MOHAMMED LAWAL**  
CEO/Principal  
Architect & Design



**JENNIFER  
ANDERSON-TUTTLE**  
Principal Director  
Public Sector



**RANDY KLING**  
Sr. Project Architect /  
Manager



**KEON  
BLASINGAME**  
Project Manager



**CHRIS LAABS**  
Project Architect /  
Manager



**TUNDE OLUSANYA**  
Design / Modeling



**NICOLE  
BAUKNIGHT**  
Documentation



**SUSAN  
JACOBSON**  
Interior Design



**ROSS  
ANDERSON**  
Interior Design



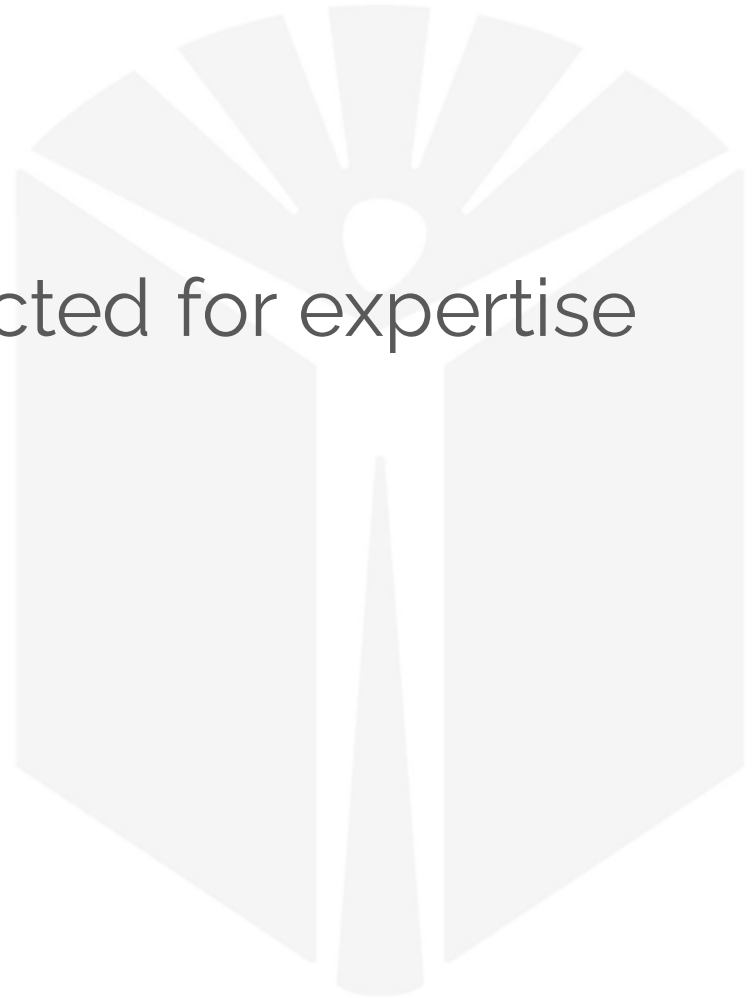
**PHIL RAMSAY**  
Specifications

Support and resources from a firm of 50+

# Design Team

Sub-Consultant team selected for expertise and experience in:

- Library Design
- Equity and Inclusion
- Historical Buildings
- Sustainable Design



# Design Team



SAINT PAUL  
MINNESOTA



SAINT PAUL  
PUBLIC LIBRARY



## COMMUNITY ENGAGEMENT

TRICIA HEURING  
Founder Public Functionary  
Adjunct Professor MCAD

## STRUCTURAL



## CIVIL

PIERCE PINI &  
ASSOCIATES, INC.

## MEP & ENERGY MODELING



## LANDSCAPE



ASAKURA  
ROBINSON

## HISTORICAL



NEW HISTORY

## COST ESTIMATING



## ACOUSTICS



KVERNSTOEN, RÖNNHOLM & ASSOCIATES  
CONSULTANTS IN ARCHITECTURAL ACOUSTICS

# Key Engagement Team



**TRICIA HEURING**  
Community Engagement Strategist



**MOHAMMED LAWAL**  
CEO/Principal Architect & Design



**JENNIFER ANDERSON-TUTTLE**  
Principal Director Public Sector



**SAM ERO-PHILLIPS**  
Project Designer





## Cohort Lead and Arts Consultant

### Tricia Heuring

Tricia Heuring is a Thai American curator, public art consultant, and educator. Her practice has been shaped by creating opportunities and community for emerging, BIPOC artists in the Twin Cities. As a co-founder of Public Functionary, a Northeast Minneapolis-based multidisciplinary arts platform, she supports under-resourced artists in building economic sustainability through studio practices and exhibitions. Advocating for an equitable and inclusive MSP arts sector has led to consulting and teaching with civic, grant-making, public art, and academic organizations. As a thought leader in the arts, she has been a speaker at Tedx UMN, MCAD, Pollen Midwest, Walker Art Center, Common Field, Springboard for the Arts, Creative Mornings, American Swedish Institute, The Coven, among others. Tricia is a graduate of Macalester College and holds an M.A. in arts management from St. Mary's University.

# Artist Advisory Cohort



The Artist Advisory Cohort will participate in the ongoing community engagement effort for the design of the Hamline Midway, Hayden Heights and Riverview Libraries. This includes regular meetings and events with stakeholders, and examining data collected to date through previous engagement efforts. They will co-facilitate and lead ideation on creative engagement sessions with LSE for community feedback. They will identify points of particular relevance, whether tensions, connections or opportunities, and develop creative encounters for further public conversation around those points. They will also reflect on their own experience as St. Paul artists and community members to creatively inspire dialogue about the future of libraries as cultural hubs.

The artist advisory cohort will review and represent community interest in late stage design review and provide recommendations for arts engagement and/or incorporation of public artworks in future phases of the project.



## Artist Advisory Cohort

**Rebekah Crisanta de Ybarra** (Maya-Lenca Nation) is a multidisciplinary artist, musician, and culture bearer whose work is rooted in Indigenous Futurisms. She has extensive experience in community-based social practice, public arts, creative place-making, and intergenerational arts education with Twin Cities nonprofits, schools, and libraries. She is a 2021-22 Jerome Hill Artist Fellow. Previously she has been a recipient of the Knights Art Challenge as an artist/curator creating Electric Machete Studios Latinx art and music production house and gallery. She has also worked with Creative City Making public art projects for building equity in the Minneapolis departments of Regulatory Services, and with Forecast Public Art creating temporary murals for the Flint Hills Festival. She is currently working with Public Art St. Paul and the City of St. Paul on a public art project honoring the West Side Flats history and Wabasha corridor.



## Artist Advisory Cohort

**Bayou Bay** is an artist and designer born in St. Paul. Bayou creates mixed-media art called Affirmation Mirrors composed mostly of fabric-wrapped wood, yarn, mirrors, and beads. He also creates murals, art installations, digital illustrations, digital and print materials for artists and organizations, woodwork, and works as a teaching artist. Bayou's art and design embody themes of nature from the micro to the cosmic, black and collective liberation, healing trauma, time, portals, geometry, setting intentions for affirmations, asking questions, symbols, and identity exploration. Bayou is 1/3rd of the Studio Thalo artist collective, a member of the Million Artist Movement artist cooperative, and a collaborating muralist with the Creatives After Curfew mural collective.



## Artist Advisory Cohort

**Xee Reiter** is a self-taught artist specializing in watercolor, pen, and ink illustrations. As a first-generation Hmong American, you can largely find cultural influences in her works. Her artistic exploration includes but is not limited to portraiture, art journaling, mural art, typography, and calligraphy works. Xee lives in Saint Paul, Minnesota with her husband and three kids. You'll find her with sketchbooks, pens, and pencils doodling across the cities, from park trails to Hmong Village, as well as in her own backyard where she has started a mini urban farm and garden, complete with chickens and a wide variety of plants and vegetables. She has worked with local organizations such as TPT PBS, Minnesota Department of Health, Minnesota Public Radio, The Ordway, and Hmong Museum to connect community through her artistry.

# Process for Engagement

**Library Design Project Ambassadors** - IAP2 Level Involve|Collaborate

Comprised of invited neighborhood groups, associations and youth leadership teens

**All Inclusive Community Engagement** - IAP2 Level Involve

Series of progressive Open House Meetings

**All Inclusive Community and Library Users** - IAP2 Level Involve

Series of progressive Surveys

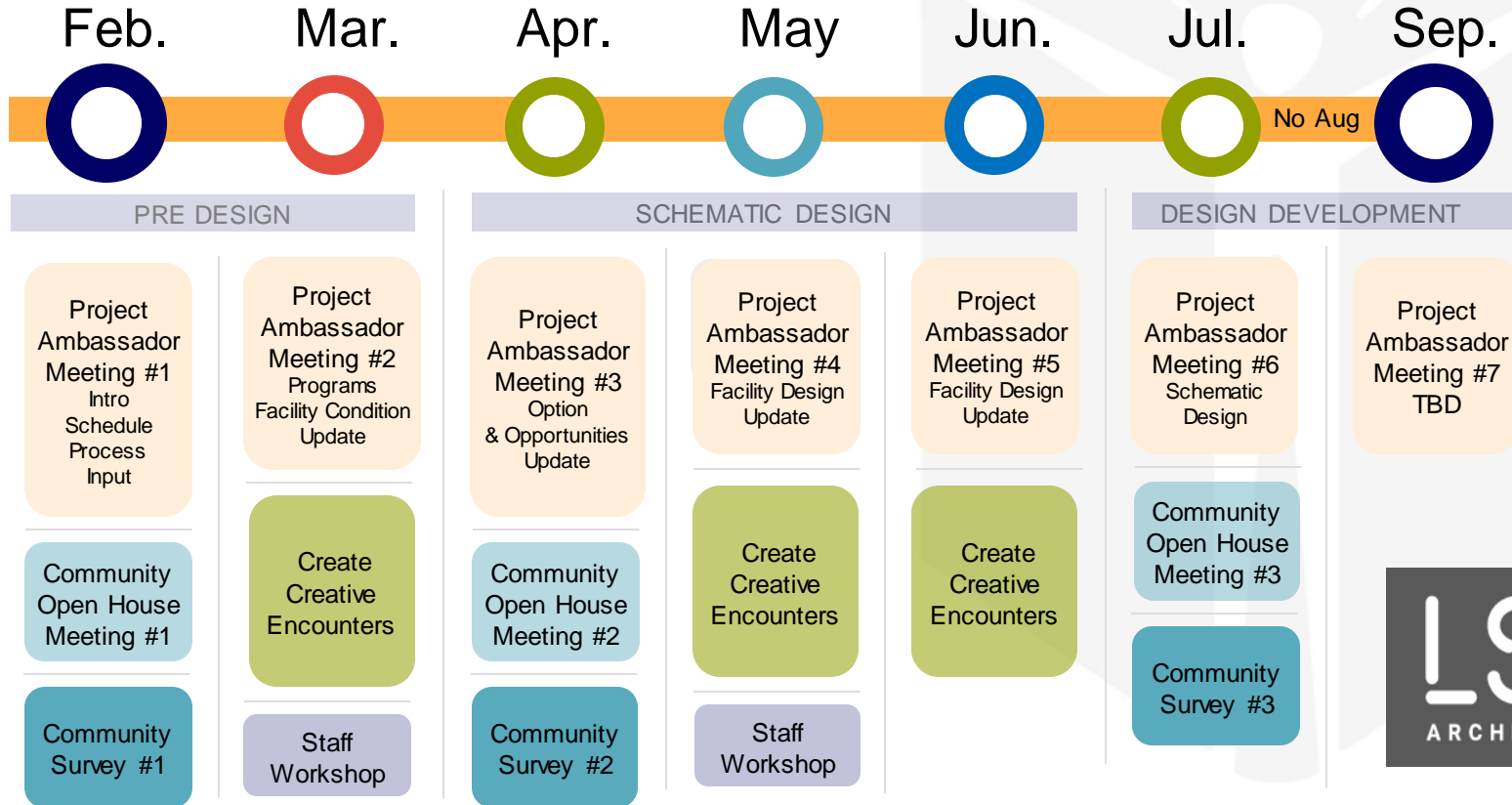
**Artist Advisory Cohort** - IAP2 Level Collaborate | Embedded in the Design

Co Facilitators of Engagement, lead ideation on engagement sessions and create creative encounters within the community

**Library Staff Input** – IAP2 Level Collaborate

**Other?**

# Community Engagement Timeline



# Youth Engagement

- Youth voice is essential to equitable facilities design. This process ensured youth voices and perspectives are included in library designs.
- 47 neighborhood teens worked with the Youth Leadership Initiative (YLI), Right Track+ Interns, and SPPL staff
- Youth provided insight to inform schematic designs on:
  - Building renovation
  - Programs & services
  - Access
  - Engagement
- We are engaging youth throughout the design process.



# Youth Suggestions

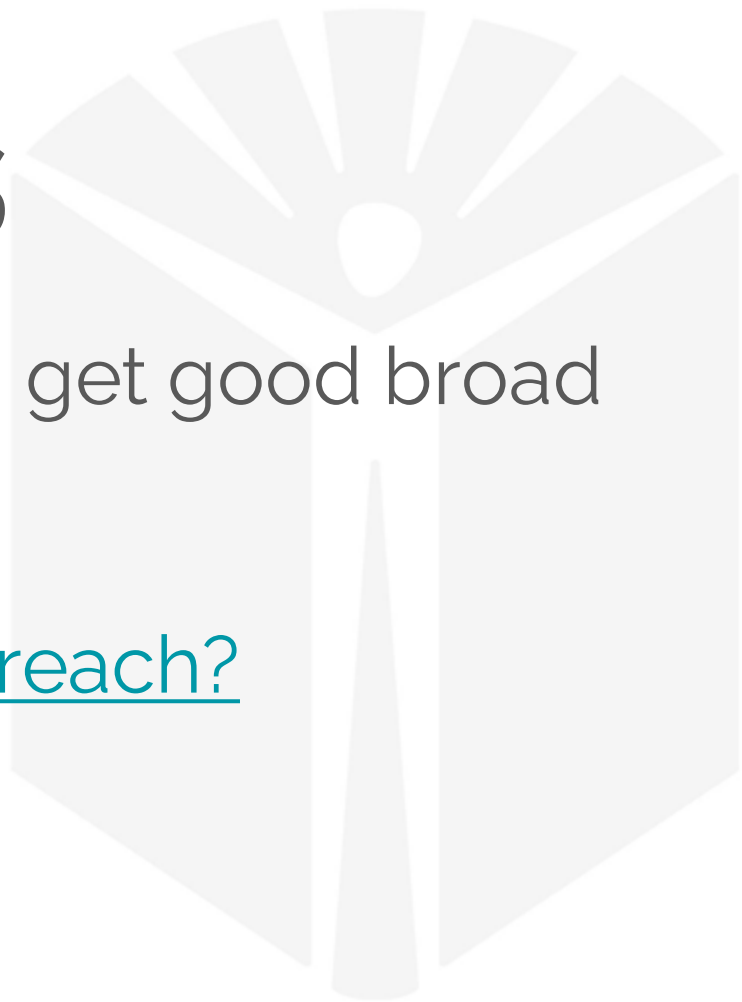
- Expand space & hours to accommodate a variety of needs.
- Make the library more vibrant, comfortable, and welcoming.
- Increase access and usability by addressing layout, service, and transportation issues.
- Create & market to more teen-specific programs.
- Increase the collection of teen materials.
- Provide ongoing opportunities for youth to hear from each other and give input to the library.



# Your ideas

What ideas do you have to get good broad Community engagement?

[How can you broaden the reach?](#)



# Your Libraries





# Hayden Heights Library

**Gross Area**

11,356 SF

**Net Usable**

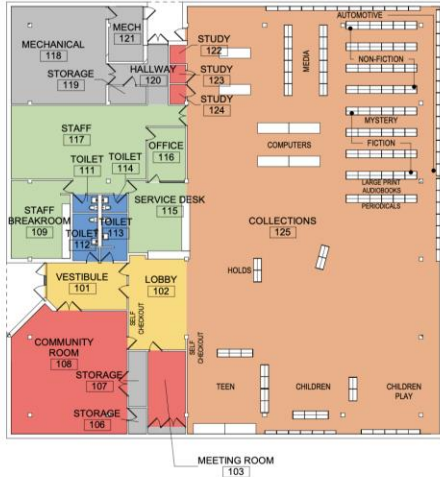
10,345 SF

**Net Usable Public**

8,855 SF

## Assessment Big Picture

- Study Rooms do not meet accessibility
- Finishes are worn and dated
- No visual control of restroom at entry
- Staff restrooms do not meet accessibility
- Window in staff workroom leaks
- Doors need to be replaced
- Single-story, wide-open, flexible space





# Riverview Library

**Gross Area**

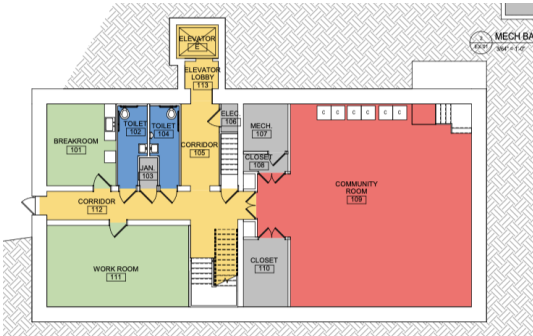
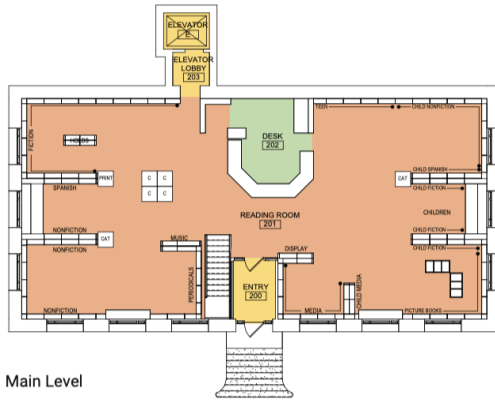
8,418 SF

**Net Usable**

6,380 SF

**Net Usable Public**

6,250 SF



## Assessment Big Picture

- Accessible entry is inequitable
- Approach to accessible entry does not meet accessibility
- Poor exterior sightlines to accessible entry are a security concern
- Building is lacking mechanical ventilation however the floor to floor height of 12' allows for HVAC
- Remote lower level restrooms present major security challenge
- Carnegie Library; Historical Preservation Status



# Hamline Midway Library

**Gross Area**

7,911 SF

**Net Usable**

5,732 SF

**Net Usable Public**

5,045 SF



Main Level



Lower Level

## Assessment Big Picture

- Accessible entry off the alley is inequitable
- Building is lacking mechanical ventilation
- Floor to floor height of 9'-6" is limiting
- Lower level hallway width and height do not meet accessibility requirements
- Structural system has significant deterioration in visible areas
- Remote lower level restrooms presents major security challenges
- Beautiful stone archway

# Next Steps for this Group

- Continue to follow the projects progress at [www.sppl.org/transforming-libraries](http://www.sppl.org/transforming-libraries).
- Join us at the upcoming Community Open House Meeting #1 on Thursday February 24<sup>th</sup> 6:30-7:30 pm - Registration Required.
- Send additional thoughts or ideas to :  
Marika Staloch at [marika.staloch@ci.stpaul.mn.us](mailto:marika.staloch@ci.stpaul.mn.us)

# Homework

- Share what you have heard and bring feedback and input to the next meeting to share
- See you on March 8 for Updates and discussion on Programs and Options
- Before you go, leave your anonymous thoughts [What did you think about tonight's meeting?](#)

***Thank you!***

# References

Reimagining the Civic Commons. [Place Driving Equity: An evidence-based action guide on the role of public space for shared prosperity](#), 2021.

Institute of Museum and Library Services. [Understanding the Social Wellbeing Impacts of the Nation's Libraries and Museums, 2021 Report](#), 2021.

Federal Reserve Bank of Chicago. [The Returns to Public Library Investment](#), July 2021.

