

Hamline Midway Library Community Discussion

MARCH 9, 2021



SAINT PAUL
PUBLIC LIBRARY

Hamline Midway Library Redesign



Welcome!

Tonight's Agenda:

- Welcome & Introductions
- Tips & Tricks for Online Engagement + Ground Rules
- Icebreaker & Menti practice
- SPPL Facilities Planning: Process thus far & what we have learned
- Renovation Possibilities
- Rebuild Possibilities
- Tell Us Your Priorities in a Library

Tips & Tricks

- Turn video on if you can
- Mute your microphone.
- Type questions in the chat, or click "hand" to let us know if you have a question.

Ground Rules

- Give & receive welcome
- Be present as fully as possible
- Share your truth in ways that respect other people's truth
- When the going gets tough, turn to wonder.
 - *"I wonder what brought them to this belief. I wonder what they're feeling right now. I wonder what my feeling teaches me about myself."*

SPPPL Facilities Direction

PROCESS THUS FAR & WHAT WE HAVE LEARNED

MISSION

We welcome all people to connect, learn, discover, and grow.

VISION

We imagine a Saint Paul where all people feel seen, safe, and welcome. We imagine a city where libraries bring people together to experience hope, joy, and creativity through learning.

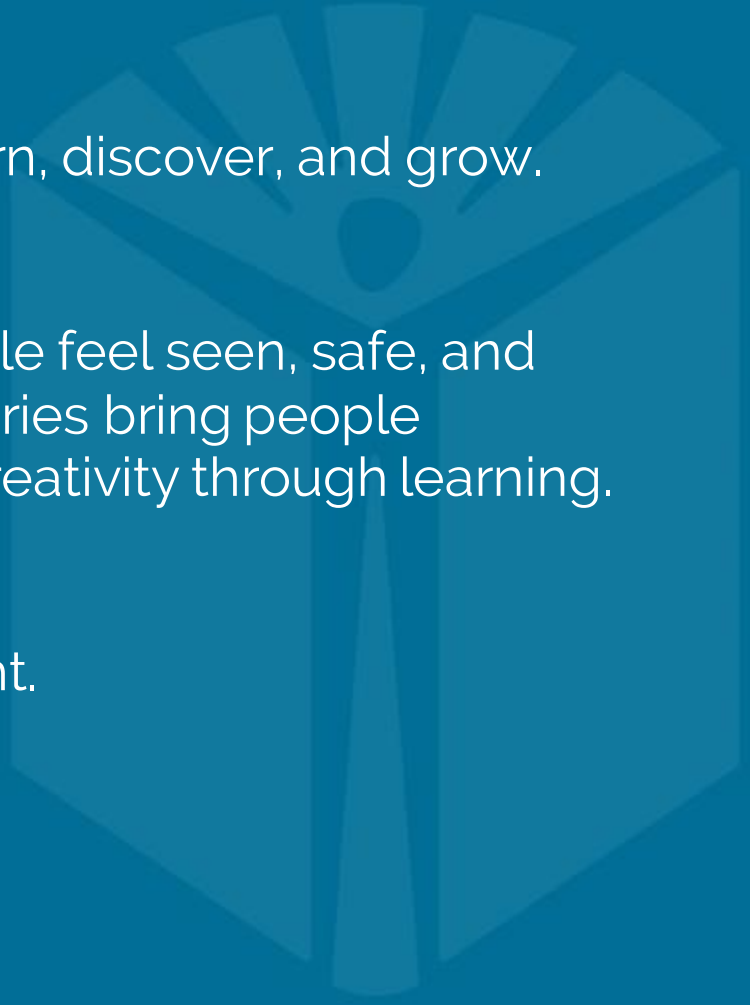
VALUES

We believe that learning is a human right.

We believe in connection.

We believe in curiosity.

We believe in the power of belonging.



Timeline

Launch new mission, vision, values goals through "SPPL 2022" strategic direction



Share "SPPL Facilities Direction" with City leaders & community



Develop project proposals & seek funding

2018

2019

2020

2021 and beyond 


Community engagement to inform SPPL strategic direction



Community engagement to inform facilities vision



Community engagement to inform decisions on future project proposals



**We have not yet
secured any funding.
This year is the start of
the fundraising
process.**

What we heard

In 2018, we talked with our community & heard:

- People want libraries to focus on young people & families.
- People want libraries to hold space for both quiet & loud activities.
- People face structural, cultural, & financial barriers to using libraries.
- People seek an environment that fosters safety & belonging.
- People seek programming beyond books & buildings.

What we learned

In 2019, we talked with our community about our facilities. We assessed the condition & function of our buildings. We learned:

- Community members feel pride for their neighborhood library.
- Across demographic & age groups, the library is viewed as a place for exposure to new things & people & as a place to have connections with other people.
- Outdated buildings struggle to support high use.
- SPPL facilities are falling behind their peers.

What we learned

- Cultural nuances & perceptions affect sense of belonging. Cultural including generational, ethnic, family structure, & economic
- Not all users understand how libraries are evolving & can create clashing “norms”
- Patrons look to have higher quality settings & experiential subtleties (inside & outside) that match their pride
- Redesign space that is accessible & inclusive for a variety of modes of use

What we learned

- Engage teen space to meet their needs to grow, connect, & play
- Activate the front & create a sense of welcome
- Create initiatives to bring the neighborhoods together
- Program intergenerational transition space
- Create space & systems to support staff interacting with patrons



**Libraries in Saint Paul
are well loved, well
used, & well worn.**

Library as Change Agent



The role of libraries is evolving to serve as resource-rich, community-oriented spaces.

Technology and learning through play are high-impact strategic opportunities.

Hamline Issues

- Significant structural and building systems issues: water infiltration, moisture, indoor air quality, concrete repair, and more.
- Facilities consultant: "This building is in bad condition."
- ADA Accessibility:
 - Entry
 - Lift to lower level Auditorium
- Need updated restrooms on Lower level
- Insufficient convenience power and data
- Reorganize and refresh staff work room, break room and restroom spaces



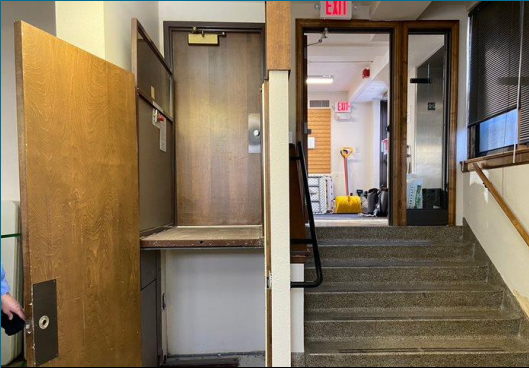
1558 W. Minnehaha Ave



inflexible main floor layout; no acoustic separation



Low clearance in basement hallway to only public restroom



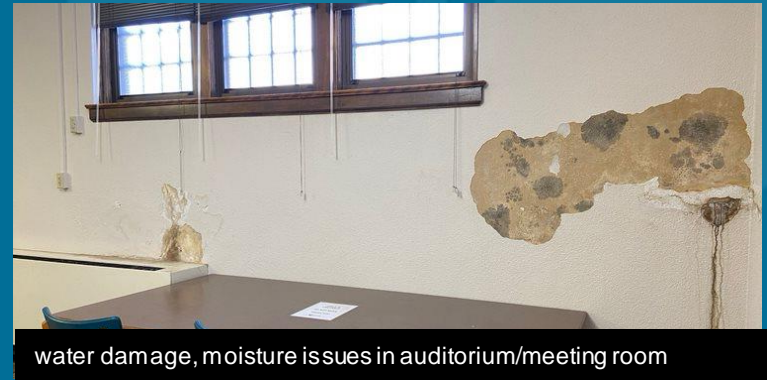
accessibility challenges in auditorium entry



non-functioning fireplace



basement restroom = safety risk



water damage, moisture issues in auditorium/meeting room

Possibilities

RENOVATION



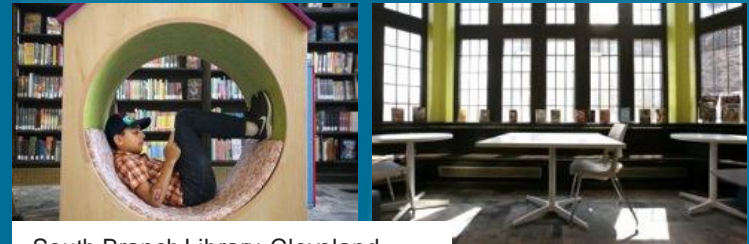
SAINT PAUL
PUBLIC LIBRARY

RENOVATION

- Maintain classic feel
- Update/refresh interior to better meet community needs
- Possibilities through renovation:
 - Improved play-based learning space
 - Enhanced technology
 - Entire interior refresh
 - Updated building systems – HVAC, power, data, plumbing, etc.
- Estimated \$3.6M, 2022



source: cleveland.com



South Branch Library, Cleveland



Hosmer Library, Minneapolis

Possibilities

NEW BUILDING



SAINT PAUL
PUBLIC LIBRARY

NEW BUILDING

- Expand square footage by at least 20%
- Offers new possibilities not possible within existing structure:
 - More flexible community meeting spaces
 - Improved accessibility of entrances and restrooms
 - Individual work/study rooms
 - More options for youth/teen/creative space
- Potential to meet high sustainability goals – e.g. LEED certification or Net Zero
- Estimated \$8.1M, 2023

Single-story net zero energy library
(Atherton, CA)



Centennial Library, Anoka Co.



Loudoun County Public Library; source: hga.com

Thank you for coming!

sopl.org/facilities-direction



SAINT PAUL
PUBLIC LIBRARY